




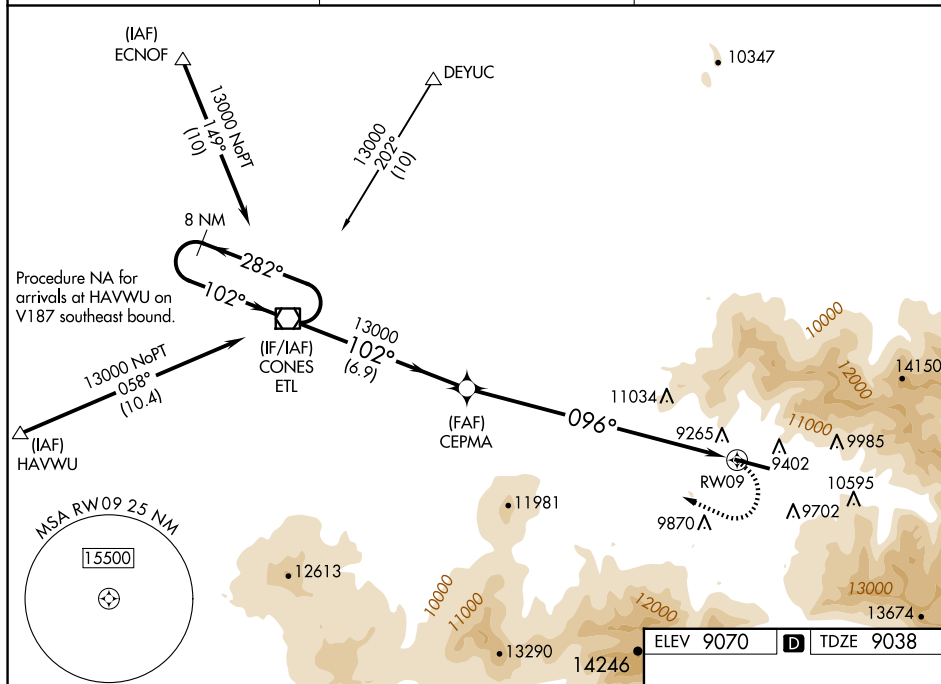
WAAS CH <b>82621</b> <b>W09A</b>	APP CRS <b>096°</b>	Rwy Ldg <b>6911</b> TDZE <b>9038</b> Apt Elev <b>9070</b>
--	------------------------	---

RNAV (GPS) Y RWY 9  
TELLURIDE RGNL (TEX)

	Circling NA at night. When local altimeter setting not received, procedure NA.
	Circling NA north of Rwy 9-27. DME/DME RNP-0.3 NA.
 -17°C	#Missed approach requires a minimum climb of 380 feet per NM to 12500.

**MISSED APPROACH:** Climbing right turn to 15000 direct ETL VOR/DME and hold, continue climb-in-hold to 15000.

AWOS-3 <b>118,325</b>	DENVER CENTER <b>125.35 354.05</b>	UNICOM <b>123.0 (CTAF) 0</b>
--------------------------	---------------------------------------	---------------------------------



8 NM Holding Pattern

ETL VOR/DME

CEPMA

13000

282°

102°

10.2

13000

09°

3.69°

TCH 46

6.3 NM

6.9 NM

3.7 NM

6.3 NM

15000

ETL

\*LNAV only.

RW09

CATEGORY	A	B	C	D
LP MDA	11500-1¼ 2462 (2500-1¼)	11500-1½ 2462 (2500-1½)		NA
LNAV MDA#	11900-1¼ 2862 (2900-1¼)	11900-1½ 2862 (2900-1½)		NA
LNAV MDA	12140-1¼ 3102 (3100-1¼)	12140-1½ 3102 (3100-1½)		NA
CIRCLING	12140-1¼ 3070 (3100-1¼)	12140-1½ 3070 (3100-1½)		NA

ELEV 9070	<b>D</b>	TDZE 9038
-----------	----------	-----------

Diagram illustrating a beam with a deflection of 0.4% UP and a star symbol indicating a value of 7111 X 100.

TELLURIDE, COLORADO  
Amdt 1 15OCT15

37°57'N-107°55'W

TELLURIDE RGNL (TEX)  
RNAV (GPS) Y RWY 9

SW-1, 07 AUG 2025 to 04 SEP 2025