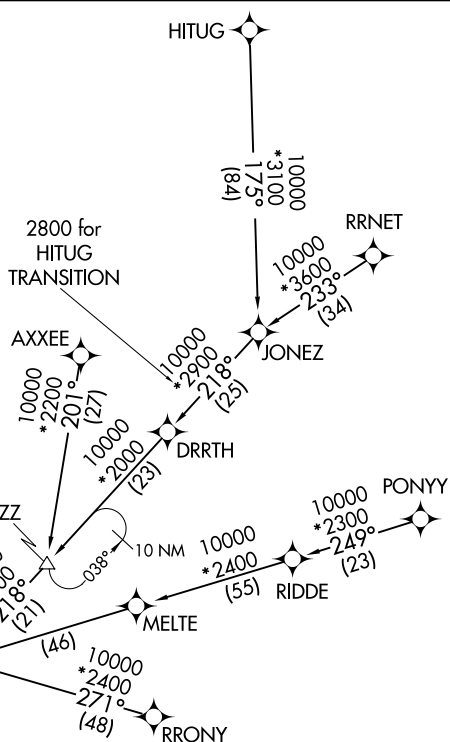


DALLAS-FORT WORTH, TEXAS

NOTE: RADAR required.  
NOTE: RNAV 1.  
NOTE: DME/DME/IRU or GPS required.

NOTE: Chart not to scale.



From SASIE on track 266° to BLECO, then on track 242° to TRUUK, then on track 190°. Expect RADAR vectors to final approach course.

## DALLAS-FORT WORTH, TEXAS

(SASIE.TRUUK2) 31MAR16