

WAAS
CH **99338**
W16A

APP CRS
166°

Rwy Ldg
TDZE **721**
Apt Elev **723**

RNAV (GPS) RWY 16R

PEROT FLD/FORT WORTH ALLIANCE (AFW)

RNP APCH-GPS.

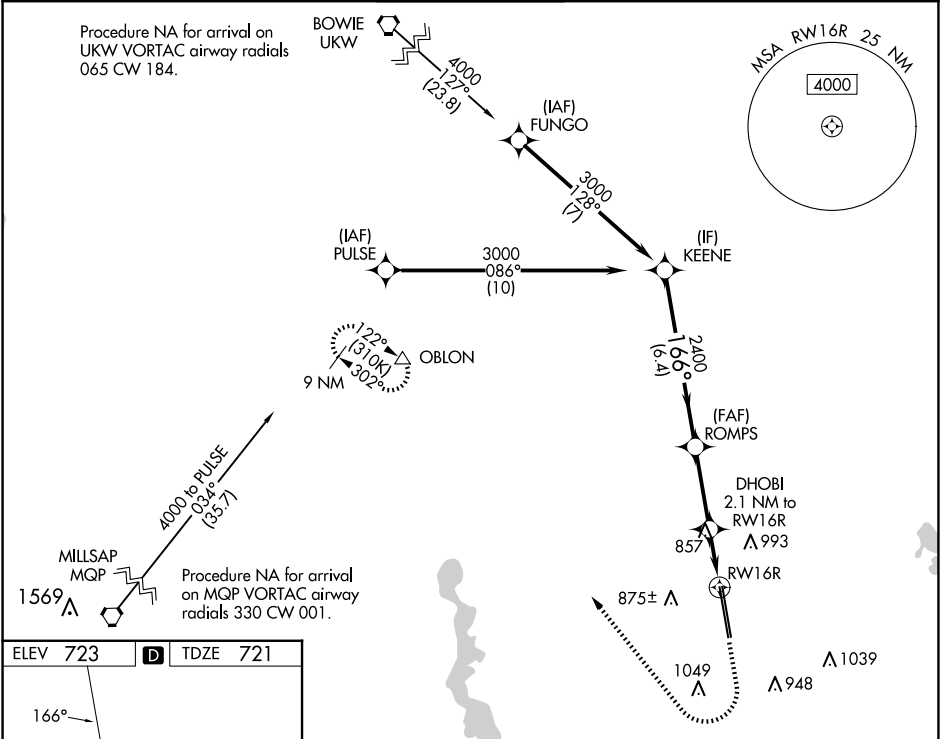
▼

▲

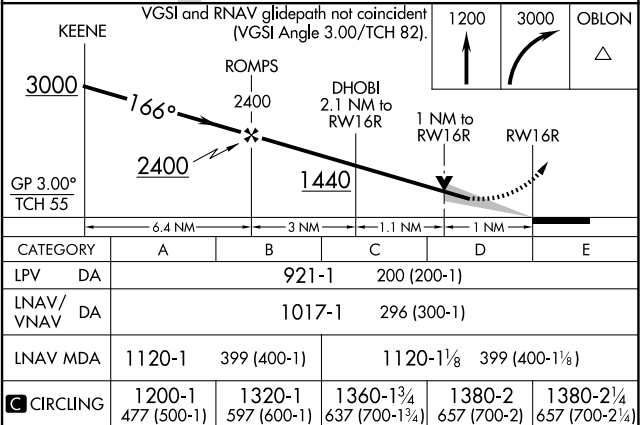
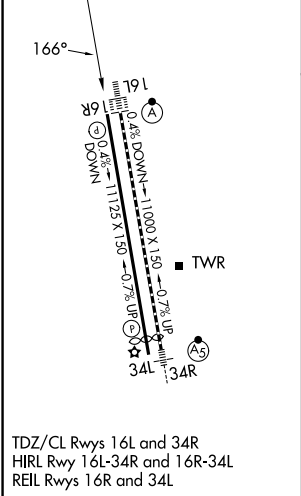
For uncompensated Baro-VNAV systems, LNAV/VNAV NA below -9°C or above 54°C. Circling NA east of Rwy 16L-34R.

MISSED APPROACH: Climb to 1200 then climbing right turn to 3000 direct OBLON and hold.

ATIS 126.925	LONE STAR APP CON 118.1 306.95	ALLIANCE TOWER 135.15 257.9	GND CON 132.65 306.2	CLNC DEL 128.725
------------------------	--	---------------------------------------	--------------------------------	----------------------------



ELEV 723	D	TDZE 721
----------	----------	----------



SC-2, 07 AUG 2025 to 04 SEP 2025

SC-2, 07 AUG 2025 to 04 SEP 2025