

WAAS CH <b>82541</b> <b>W16B</b>	APP CRS <b>166°</b>	Rwy Ldg <b>10600</b> TDZE <b>723</b> Apt Elev <b>723</b>
--	------------------------	--

## RNAV (GPS) RWY 16L

PEROT FLD/FORT WORTH ALLIANCE (AFW)

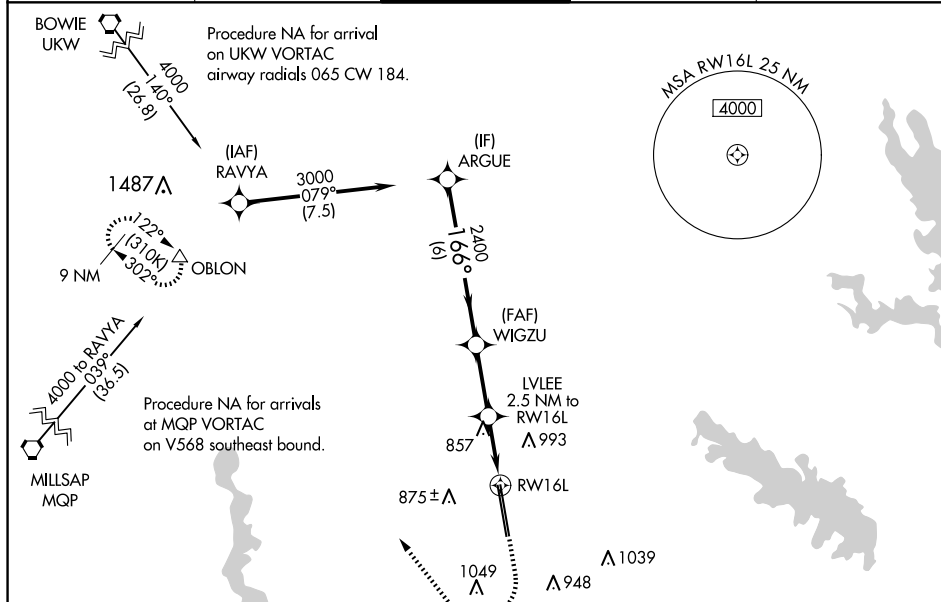
**T** For uncompensated Baro-VNAV systems, LNAV/VNAV NA below -8°C (18°F) or above 54°C (130°F). Circling NA east of Rwy 16L-34R. DME/DME RNP-0.3 NA. For inop ALS, increase LPV Cat E visibility to RVR 4000, LNAV/VNAV all Cats visibility to RVR 4500 and LNAV Cat E visibility to RVR 6000.

ALSF-2

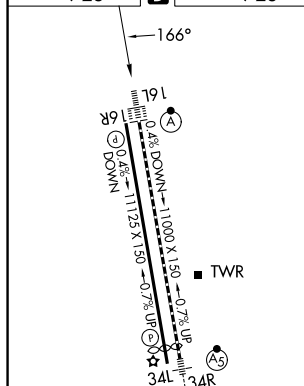


**MISSED APPROACH:** Climb to 1200 then climbing right turn to 3000 direct OBLON and hold.

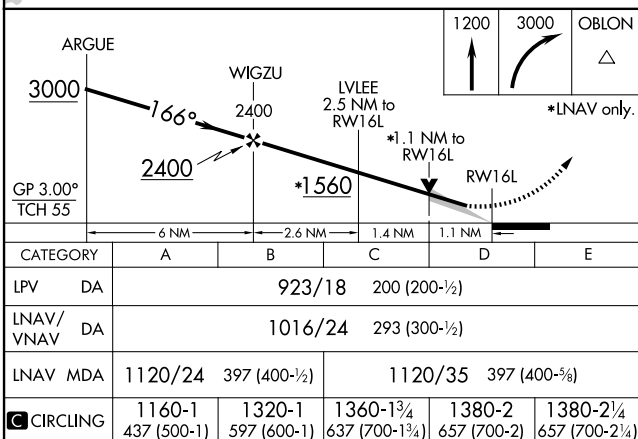
ATIS 126.925	LONE STAR APP CON 118.1 306.95	ALLIANCE TOWER 135.15 257.9	GND CON 132.65 306.2	CLNC DEL 128.725
-----------------	-----------------------------------	--------------------------------	-------------------------	---------------------



ELEV 723	<b>D</b>	TDZE 723
----------	----------	----------



TDZ/CL Rwy 16L and 34R  
HIRL Rwy 16L-34R and 16R-34L  
REIL Rwy 16R and 34L



## RNAV (GPS) RWY 16L