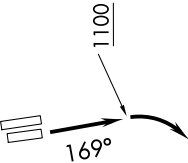


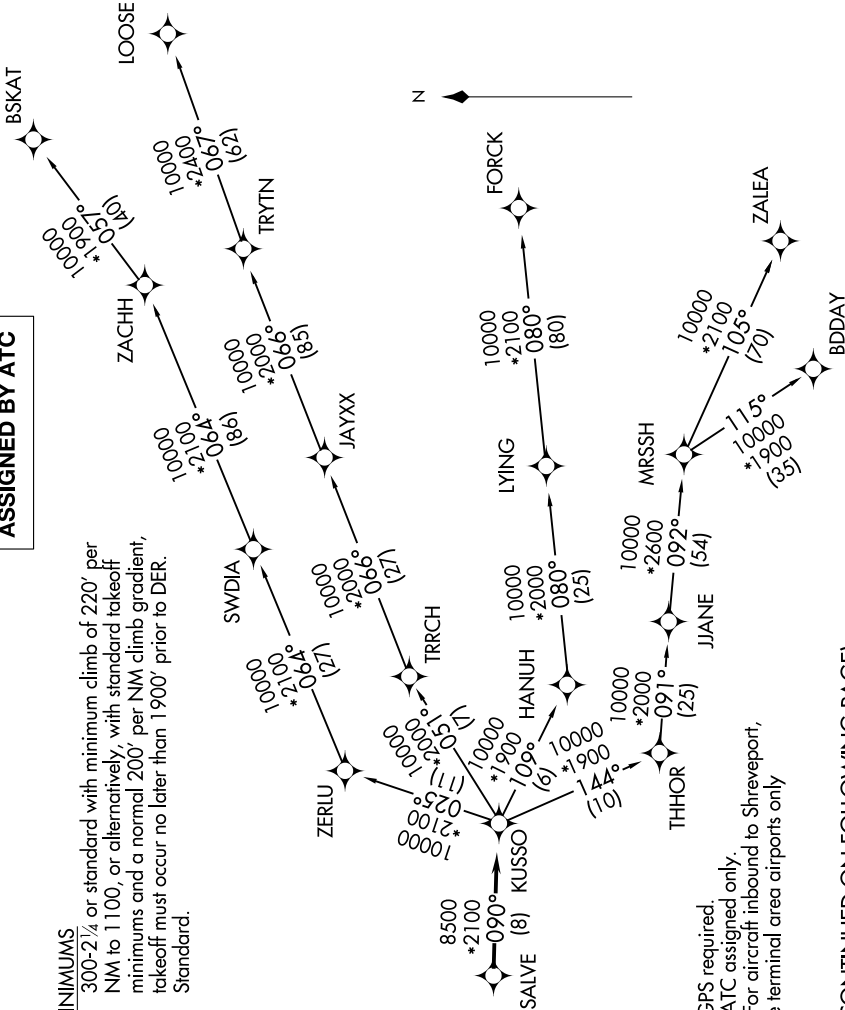
SC-2, 07 AUG 2025 to 04 SEP 2025

LONE STAR DEP CON
118.1 306.95
ATIS
126.925
CLNC DEL
128.725
GND CON
132.65 306.2
ALLIANCE TOWER
135.15 257.9

TAKEOFF MINIMUMS
Rwys 16L/R: 300-2¼ or standard with minimum climb of 220' per NM to 1100, or alternatively, with standard takeoff minimums and a normal 200' per NM climb gradient, takeoff must occur no later than 1900' prior to DER.
Rwys 34L/R: Standard.



TOP ALTITUDE:
ASSIGNED BY ATC



NOTE: RADAR required.
NOTE: RNAV 1.
NOTE: DME/DME/IRU or GPS required.
NOTE: BDDAY Transition: ATC assigned only.
NOTE: MRSSH Transition: For aircraft inbound to Shreveport, Jackson and Monroe terminal area airports only

(CONTINUED ON FOLLOWING PAGE)

NOTE: Chart not to scale.

SC-2, 07 AUG 2025 to 04 SEP 2025