

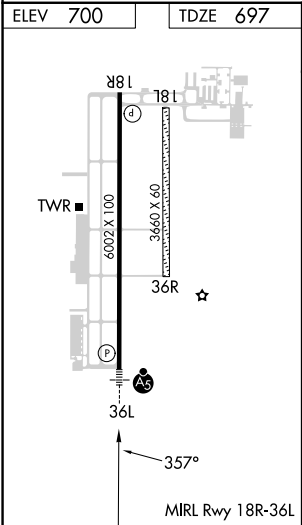
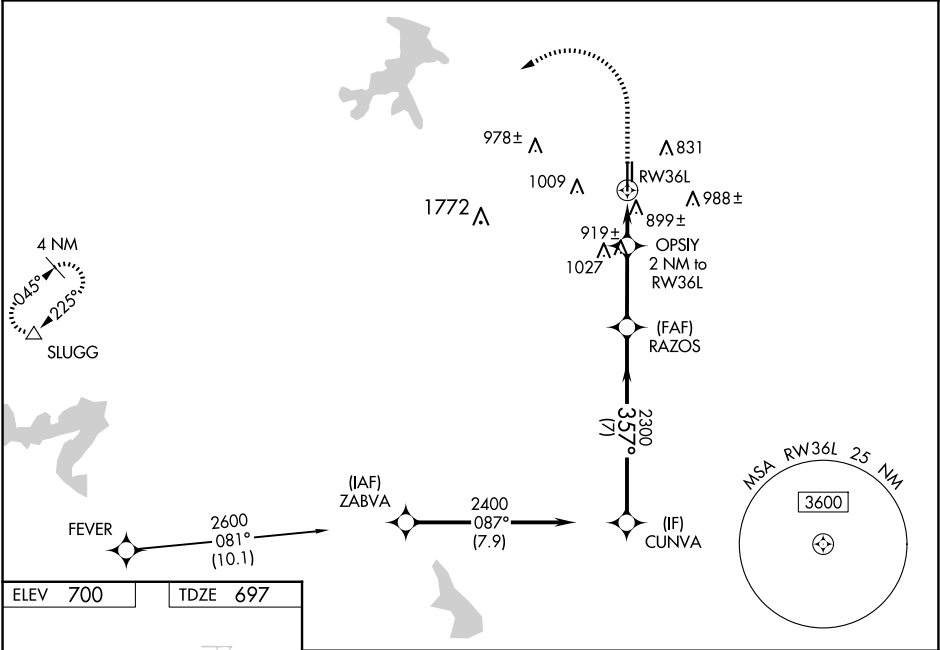
WAAS CH 57999 W36A	APP CRS 357°	Rwy Idg TDZE 697 Apt Elev 700
--	------------------------	---

RNAV (GPS) RWY 36L

FORT WORTH SPINKS (FWS)

RNP APCH - GPS.	MALSR	MISSED APPROACH: Climb to 1400 then climbing left turn to 3100 direct SLUGG and hold.
<div><div>⚠</div><div>⚠</div></div> <div>Circling NA west of Rwy 18R-36L. For uncompensated Baro-VNAV systems, LNAV/VNAV NA below -16°C or above 54°C. For inop ALS, increase LNAV/VNAV all Cats visibility to 1½ SM and increase LNAV Cats C/D visibility to 1½ SM.</div>	<div><div>⚠</div><div>⚠</div></div>	

ATIS 120.025	LONE STAR APP CON 135.975 379.9	SPINKS TOWER ★ 124.625 (CTAF) 0	GND CON 119.475	UNICOM 122.7
------------------------	---	--	---------------------------	------------------------



	1400	3100	SLUGG	OPSIY 2 NM to RW36L	RAZOS	CUNVA
				1.3 NM to RW36L	2300	2400
				0.7 NM	2300	GP 3.00° TCH 50
CATEGORY	A	B	C	D		
LPV DA	897-½		200 (200-½)			
LNAV/VNAV DA	1193-1		496 (500-1)			
LNAV MDA	1160-½		463 (500-½)		1160-1	463 (500-1)
CIRCLING	1200-1		500 (500-1)		1340-1¾ 640 (700-1¾)	1340-2 640 (700-2)