

FORT WORTH, TEXAS

AL-6917 (FAA)

24305

WAAS CH 62899 W18A	APP CRS 177°	Rwy Idg 6002 TDZE 700 Apt Elev 700
--	------------------------	---

RNAV (GPS) RWY 18R

FORT WORTH SPINKS (FWS)

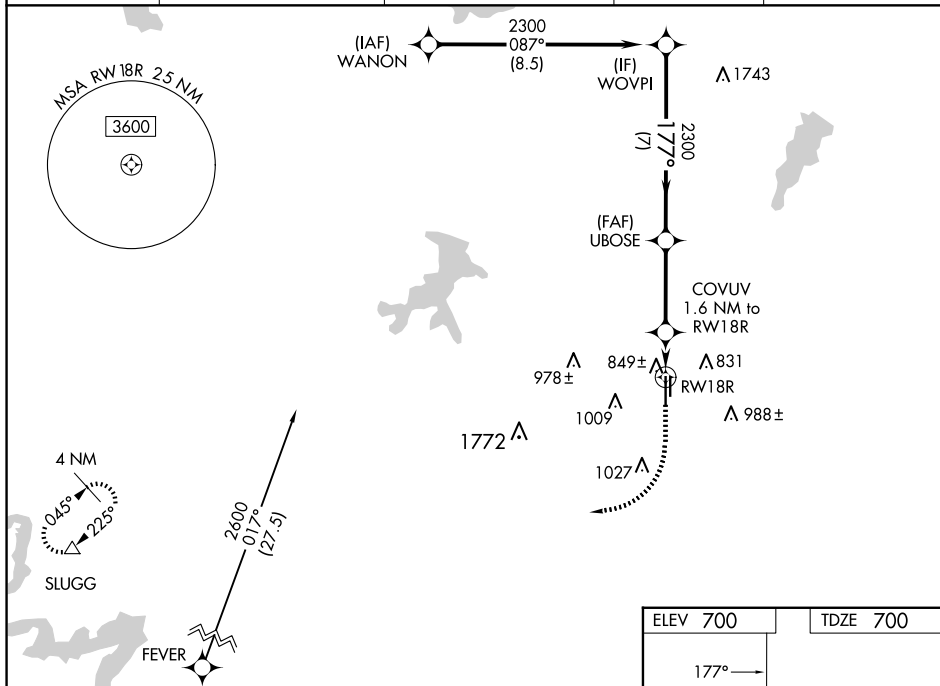
RNP APCH-GPS.



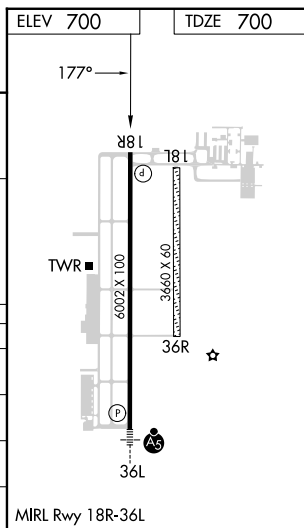
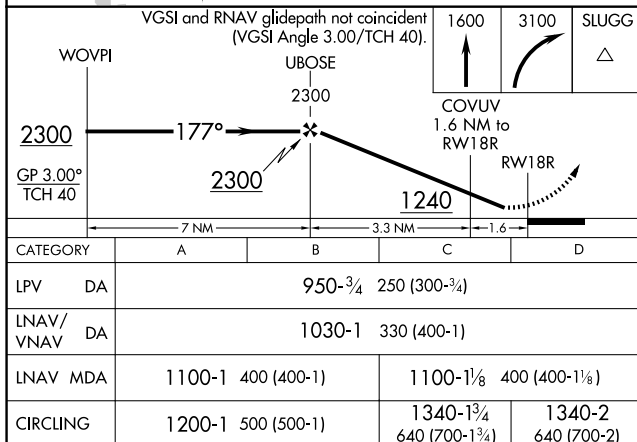
Circling NA west of Rwy 18R-36L. Rwy 18R helicopter visibility reduction below $\frac{3}{4}$ NA. For uncompensated Baro-VNAV systems, LNAV/VNAV NA below -16°C or above 54°C.

MISSED APPROACH: Climb to 1600 then climbing right turn to 3100 direct SLUGG and hold.

ATIS 120.025	LONE STAR APP CON 135.975 379.9	SPINKS TOWER ★ 124.625 (CTAF) U	GND CON 119.475	UNICOM 122.7
------------------------	---	--	---------------------------	------------------------



SC-2, 07 AUG 2025 to 04 SEP 2025



FORT WORTH, TEXAS
Amdt 1D 27JAN22

32°34'N-97°19'W

FORT WORTH SPINKS (FWS)

RNAV (GPS) RWY 18R