

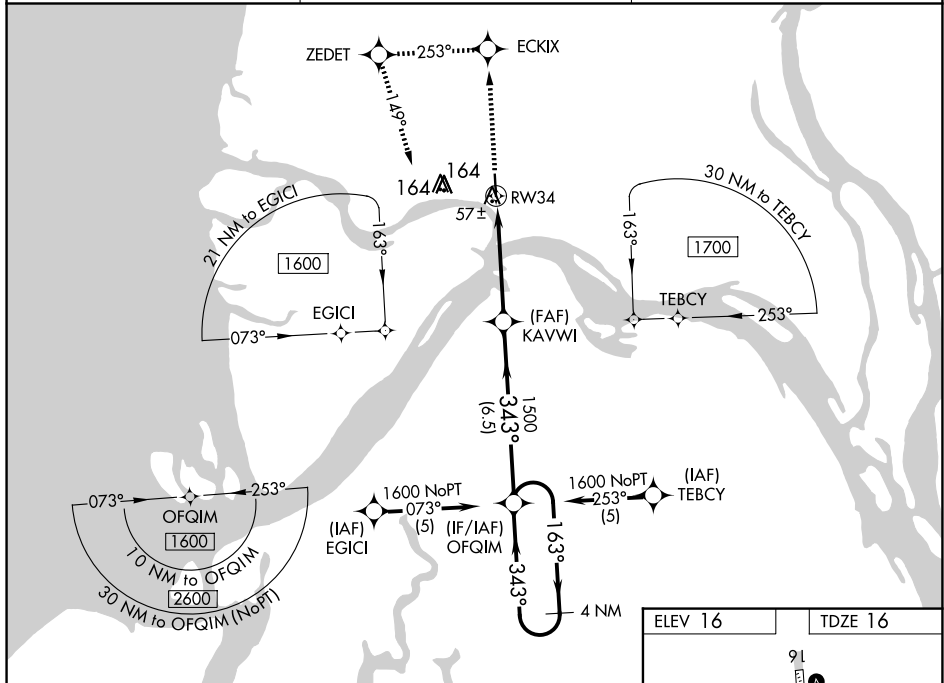
WAAS CH 42502 W34A	APP CRS 343°	Rwy Idg 4601 TDZE 16 Apt Elev 16
--	------------------------	---

RNAV (GPS) RWY 34
EMMONAK (ENM) (PAEM)

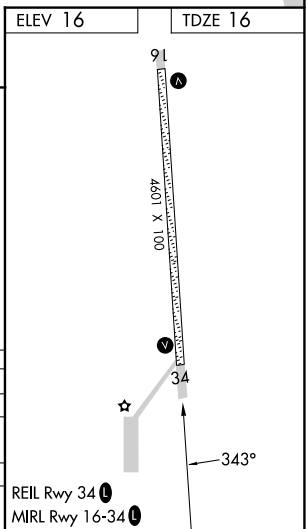
⚠ If local altimeter setting not received, use St Mary's altimeter setting and increase all DAs 168 feet and MDAs 180 feet. VDP NA with St Mary's altimeter setting. DME/DME RNP- 0.3 NA. Baro-VNAV NA when using St Mary's altimeter setting. For uncompensated Baro-VNAV systems, LNAV/VNAV NA below -25°C (-13°F) or above 48°C (119°F).

MISSED APPROACH: Climb to 1600 direct ECKIX and left turn via 253° track to ZEDET and left turn via 149° track to OFQIM and hold.

AWOS-3P 135.35	ANCHORAGE CENTER 124.0	CTAF 122.9 0
--------------------------	----------------------------------	------------------------



1600 ↑	ECKIX ✱	ZEDET ✱	OFQIM ✱	VGS1 and RNAV glidepath not coincident (VGS1 Angle 3.00/TCH 32).	
*RNAV only				OFQIM	4 NM Holding Pattern
				1600	GP 3.00° TCH 35
CATEGORY	A		B	C	D
LPV DA			266-1	250 (300-1)	
RNAV/ VNAV DA			320-1	304 (400-1)	
RNAV MDA			320-1	304 (400-1)	
CIRCLING	520-1	504 (600-1)	520-1½ 504 (600-1½)	580-2 564 (600-2)	



AK, 07 AUG 2025 to 02 OCT 2025

AK, 07 AUG 2025 to 02 OCT 2025