

WAAS CH 86702 W16A	APP CRS 163°	Rwy ldg TDZE Apt Elev	4601 16 16
--	------------------------	-----------------------------	---------------------------------------

RNAV (GPS) RWY 16

EMMONAK (ENM) (PAEM)

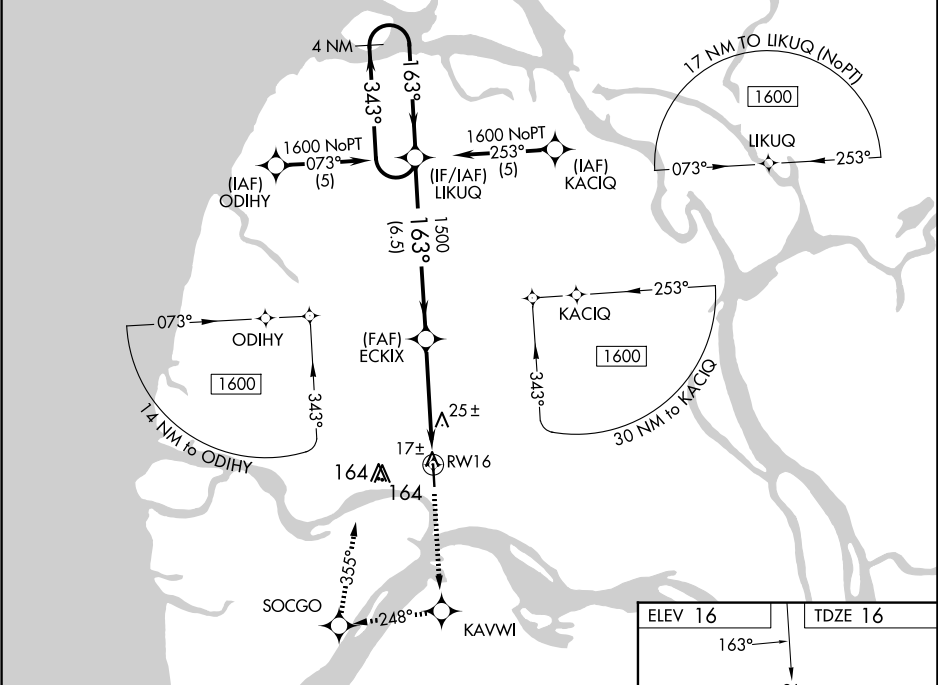
▼

▲

If local altimeter setting not received, use St Mary's altimeter setting and increase all DAs 168 feet and all MDAs 180 feet. VDP NA with St Mary's altimeter setting. DME/DME RNP- 0.3 NA. Baro-VNAV NA when using St Mary's altimeter setting. For uncompensated Baro-VNAV systems, LNAV/VNAV NA below -25°C (-13°F) or above 48°C (119°F).

MISSED APPROACH: Climb to 1600 direct KAVWI and right turn via 248° track to SOCGO and right turn via 355° track to LIKUQ and hold.

AWOS-3P 135.35	ANCHORAGE CENTER 124.0	CTAF 122.9 0
--------------------------	----------------------------------	------------------------



VGSi and RNAV glidepath not coincident (VGSi Angle 3.00/TCH 32).				
<div><div>1600</div><div>KAVWI</div><div>SOCGO</div><div>LIKUQ</div></div>				
* LNAV only				
<div><div>4 NM Holding Pattern</div><div>1600</div><div>343°</div><div>163°</div><div>763°</div><div>1500</div><div>6.5 NM</div><div>3.8 NM</div><div>0.7</div><div>RW16</div></div>				
GP 3.00° TCH 35				
CATEGORY	A	B	C	D
LPV DA		266-1	250 (300-1)	
LNAV/ VNAV DA		280-1	264 (300-1)	
LNAV MDA		280-1	264 (300-1)	
CIRCLING	520-1	504 (600-1)	520-1½ 504 (600-1½)	580-2 564 (600-2)

