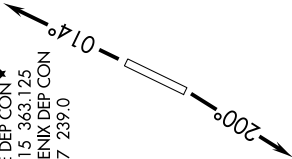


SW-4, 07 AUG 2025 to 04 SEP 2025

TOP ALTITUDE:
ASSIGNED BY ATC

ATIS
119.425
GND CON
118.0
GLENDALE TOWER ★
121.0
LUKE DEP CON ★
118.15 363.125
PHOENIX DEP CON
120.7 239.0



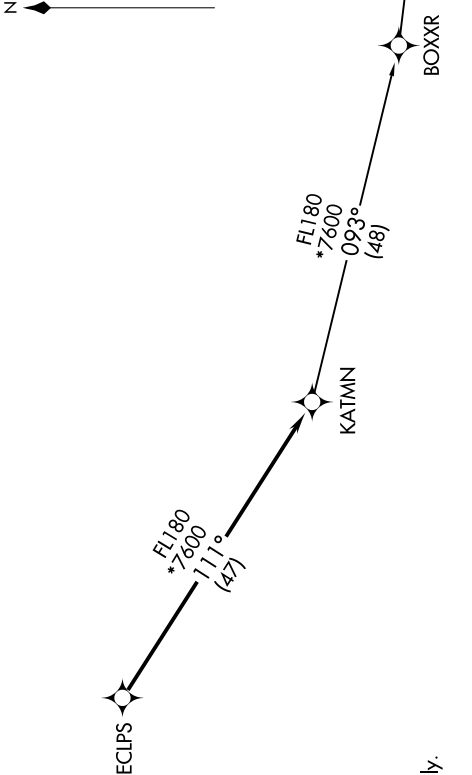
DEPARTURE ROUTE DESCRIPTION

TAKEOFF RUNWAY 1: Climb heading 014° or as assigned by ATC, thence. . . .
TAKEOFF RUNWAY 19: Climb heading 200° or as assigned by ATC, thence. . . .
. . . . on RADAR vectors to ECIPS, then on track 111° to KATMN, then on
(transition). Maintain ATC assigned altitude, expect filed altitude 3 minutes after
departure.

PHASE TRANSITION (KATMN6.PHASE)

TAKEOFF MINIMUMS
Rwys 1, 19: Standard.

- NOTE: RNAV 1.
- NOTE: Turbojets and turboprops only.
- NOTE: RADAR required.
- NOTE: GPS required.
- NOTE: Aircraft departing KGEU and KGYR ATC assigned only.



NOTE: Chart not to scale.

SW-4, 07 AUG 2025 to 04 SEP 2025