

IZZZO EIGHT DEPARTURE (RNAV)

AL-6915 (FAA)

Glendale RGNL (GEU)
Glendale, Arizona

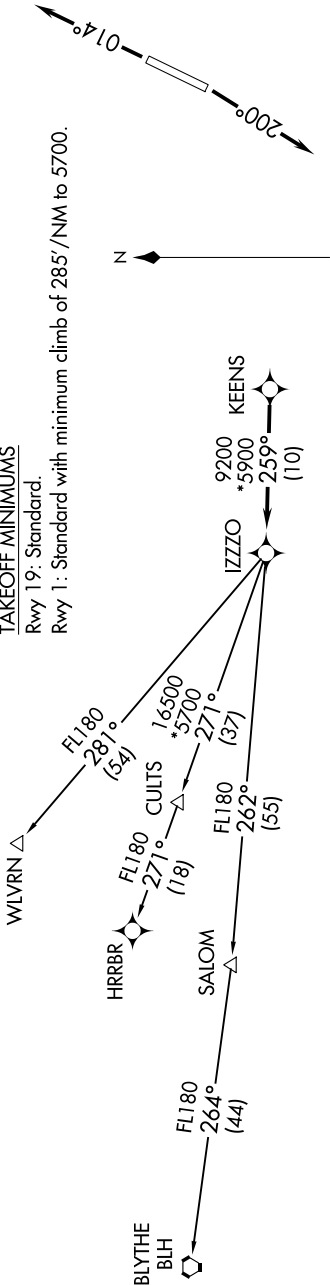
SW-4, 07 AUG 2025 to 04 SEP 2025

RNAV 1 - GPS.
RADAR required.

NOTE: Turbojets and turboprops only.
NOTE: Aircraft requesting FL220 and below must file BLYTHE Transition.
NOTE: Turbojets landing LAX, file WLVRN Transition.
NOTE: Aircraft landing other than LAX and turboprops landing at LAX: Requesting FL240 and above, file HRRBR Transition.
NOTE: Aircraft departing KGEU and KGYR ATC assigned only.

TAKEOFF MINIMUMS

Rwy 19: Standard.
Rwy 1: Standard with minimum climb of 285' /NM to 5700.



DEPARTURE ROUTE DESCRIPTION

TAKEOFF RUNWAY 1: Climb on heading 014° or as assigned by ATC, thence. . .
TAKEOFF RUNWAY 19: Climb on heading 200° or as assigned by ATC, thence. . .
...for RADAR vectors to KEENS, then on track 259° to IZZZO, then on (transition).
Maintain ATC assigned altitude, expect filed altitude 3 minutes after departure.

- BLYTHE TRANSITION (IZZZO8.BLH)
- HRRBR TRANSITION (IZZZO8.HRRBR)
- WLVRN TRANSITION (IZZZO8.WLVRN)

NOTE: Chart not to scale.

SW-4, 07 AUG 2025 to 04 SEP 2025

IZZZO EIGHT DEPARTURE (RNAV)

Glendale, Arizona
Glendale RGNL (GEU)