

|  |                        |   |
|--|------------------------|---|
| WAAS<br>CH <b>58318</b><br><b>W27A</b> | APP CRS<br><b>272°</b> | Rwy Idg<br>TDZE <b>494</b><br>Apt Elev <b>494</b> |
|--|------------------------|---|

RNAV (GPS) RWY 27

LOUISA COUNTY/FREEMAN FLD (LKU)

RNP APCH

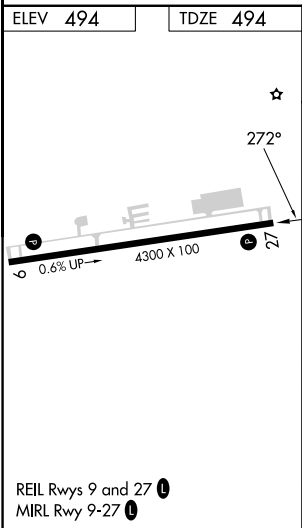
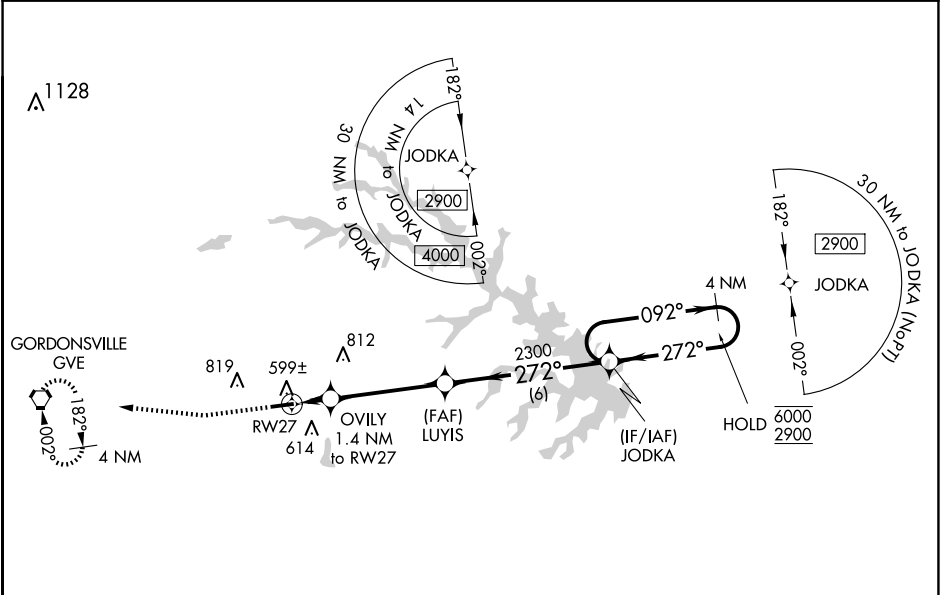
⚠

⚠

Circling NA north of Rwy 9-27. Baro-VNAV NA when using Orange altimeter setting. For uncompensated Baro-VNAV systems, LNAV/VNAV NA below -15°C or above 54°C. When local altimeter setting not received, use Orange altimeter setting and increase all DA to 780 feet and all MDA 40 feet and increase LPV and LNAV/VNAV visibility ½ SM.

MISSED APPROACH: Climb to 1000 then climbing right turn to 2900 direct GVE VORTAC and hold, continue climb-in-hold to 2900.

|                          |  |                                   |
|--------------------------|--|-----------------------------------|
| AWOS-3<br><b>119.475</b> | POTOMAC APP CON<br><b>132.85 323.125</b> | UNICOM<br><b>122.975 (CTAF) 0</b> |
|--------------------------|--|-----------------------------------|



|   |                   |                   |     |
|---|-------------------|-------------------|-----|
| 1000 2900 GVE   |                   |                   |     |
| *LNAV only  |                   |                   |     |
| RWY 27 1.4 NM to RWY 27 4.2 NM 6 NM JODKA 2300 272° 2300 092° 6000 2900 272° 4 NM Holding Pattern GP 3.00° TCH 40 |                   |                   |     |
| CATEGORY  | A                 | B                 | C D |
| LPV DA  | 744-¾             | 250 (300-¾)       | NA  |
| LNAV/VNAV DA  | 744-¾             | 250 (300-¾)       | NA  |
| LNAV MDA  | 860-1             | 366 (400-1)       | NA  |
| CIRCLING  | 900-1 406 (500-1) | 960-1 466 (500-1) | NA  |