

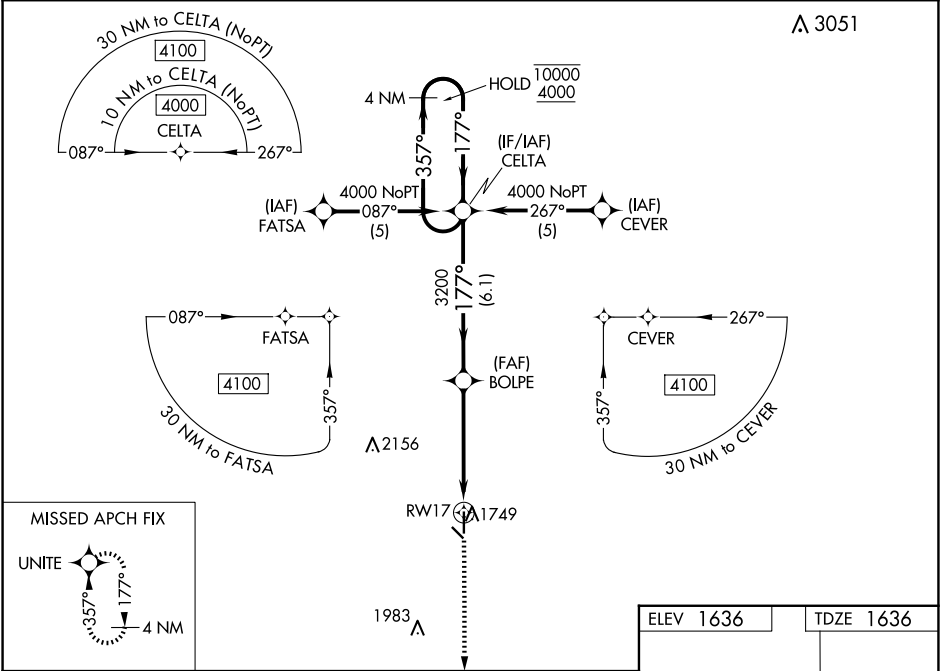
WAAS CH <b>69414</b> <b>W17A</b>	APP CRS <b>177°</b>	Rwy Idg <b>4317</b> TDZE <b>1636</b> Apt Elev <b>1636</b>
--	------------------------	---

RNAV (GPS) RWY 17

FAIRMONT STATE (F'MZ)

RNP APCH - GPS.	<div><div><div><div><div></div><div>NA</div></div><div><div>Circling to Rwy 12, 30 NA at night. Baro-VNAV NA. Use York altimeter setting; when not received use Hebron altimeter setting and increase LPV DA to 1965 feet and all visibilities <math>\frac{1}{8}</math> SM; increase LNAV/VNAV DA to 2074 feet and all visibilities <math>\frac{1}{8}</math> SM; and increase all MDAs 40 feet.</div></div></div><div><div>MISSED APPROACH: Climb to 4000 direct UNITE and hold.</div></div></div></div>
-----------------	--

JYR AWOS-3 <b>124.175</b>	MINNEAPOLIS CENTER <b>119.4 278.8</b>	CTAF <b>122.9</b>
------------------------------	--	----------------------



4 NM Holding Pattern		CELTA	4000	UNITE
10000		357°	177°	
4000				
GP 3.00°				
TCH 40				
		6.1 NM	4.7 NM	
CATEGORY	A	B	C	D
LPV DA	1934- $\frac{7}{8}$	298 (300- $\frac{7}{8}$ )	NA	
LNAV/VNAV DA	2043-1 $\frac{1}{8}$	407 (500-1 $\frac{1}{8}$ )	NA	
LNAV MDA	2240-1	604 (700-1)	NA	
CIRCLING	2240-1	604 (700-1)	NA	

