

NDB FMZ 392	APP CRS 166°	Rwy Idg 4317 TDZE 1636 Apt Elev 1636	NDB RWY 17 FAIRMONT STATE (FMZ)
-----------------------	------------------------	---	------------------------------------

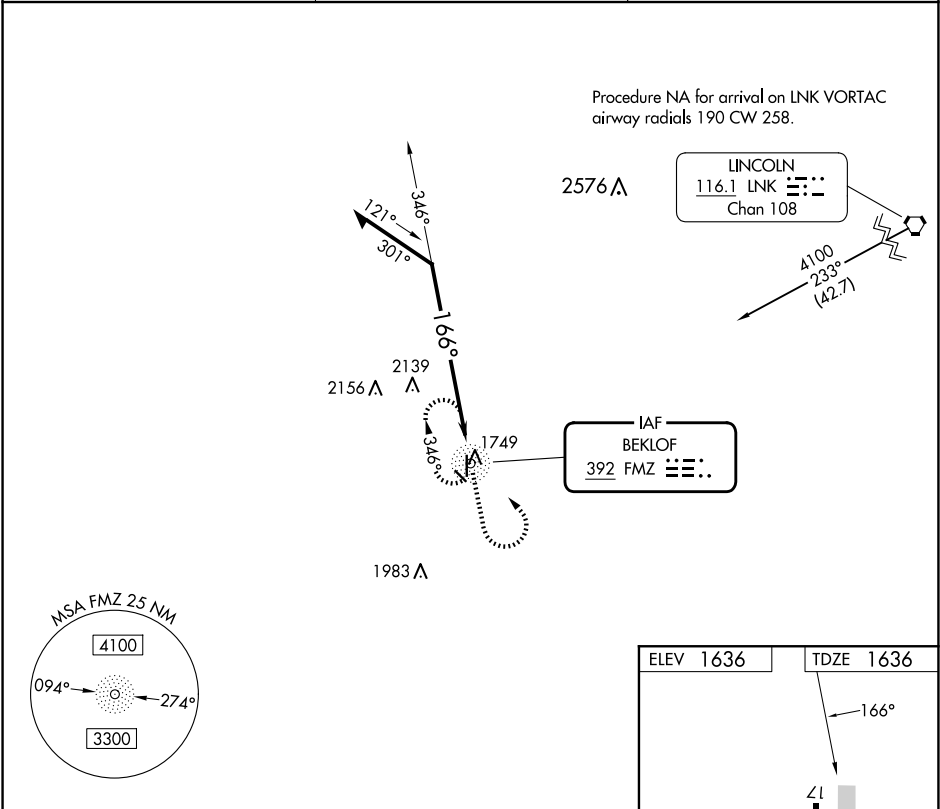
▼

⚠ NA

Circling Rwy 12, 30 NA at night.
Use York altimeter setting; when not received, use Hebron altimeter setting and increase all MDAs 40 feet.

MISSED APPROACH: Climb to 3200 then left turn direct FMZ NDB and hold.

JYR AWOS-3 124.175	MINNEAPOLIS CENTER 119.4 278.8	CTAF 122.9 0
------------------------------	--	------------------------



Remain within 10 NM		FMZ NDB		3200	FMZ
3200		346°		166°	
CATEGORY	A	B	C	D	
S-17	2540-1¼	904 (1000-1¼)	NA		
CIRCLING	2540-1¼	904 (1000-1¼)	NA		

MIRL Rwy 17-35 0