

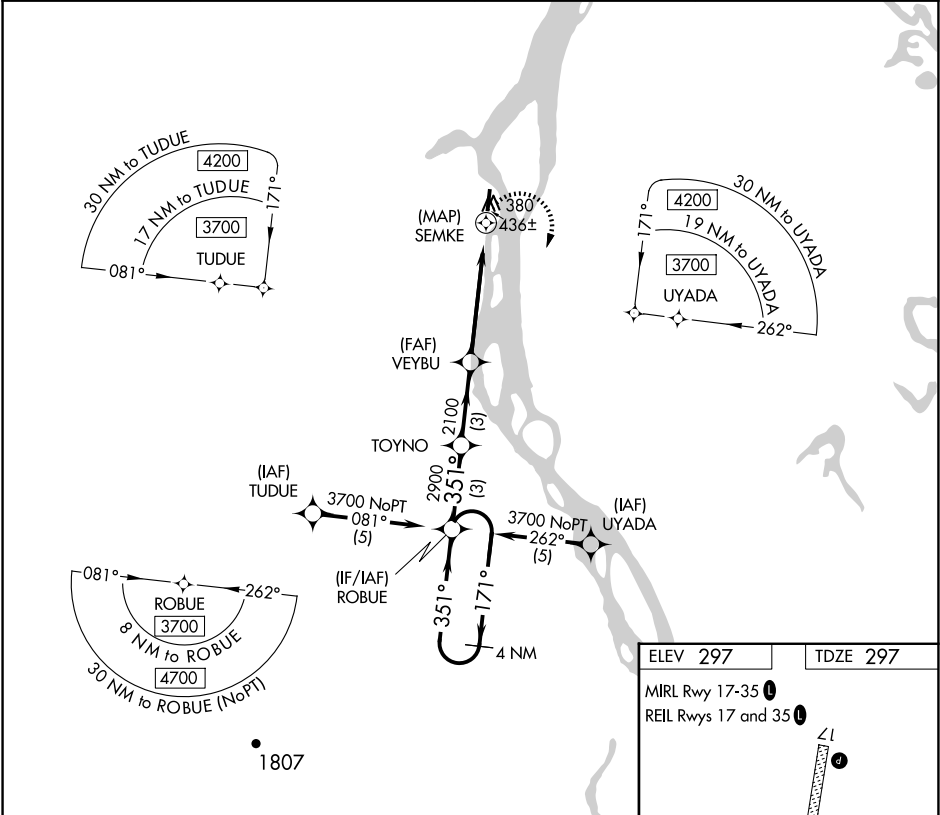
APP CRS  
351°

Rwy Idg  
TDZE  
Apt Elev

4000  
297  
297

RNAV (GPS) RWY 35  
ANVIK (ANV)(PANV)

RNP APCH - GPS.		MISSED APPROACH: Climbing right turn to 3700 direct ROBUE and hold, continue climb-in-hold to 3700.	
AWOS-3P 133.55	ANCHORAGE CENTER 135.7 335.5	KENAI RADIO 122.4	UNICOM 122.7 (CTAF) 0



4 NM

Holding Pattern

ROBUE

TOYNO

VEYBU

SEMKE

3700

171°

351°

2900

351°

2100

3.05°

TCH 35

5 NM

0.5

3700

ROBUE

VGSI and descent angles not coincident

(VGSI Angle 3.00/TCH 25).

3.00°

TCH 25

CATEGORY

A

B

C

D

LNAV MDA

780-1

483 (500-1)

780-1 $\frac{3}{8}$

483 (500-1 $\frac{3}{8}$ )

CIRCLING

840-1

543 (600-1)

840-1 $\frac{1}{2}$

543 (600-1 $\frac{1}{2}$ )

860-2

563 (600-2)

ELEV 297

TDZE 297

MIRL Rwy 17-35 0

REIL Rwy 17 and 35 0

41

4000 X 75

35

351°

351°

☆

AK, 07 AUG 2025 to 02 OCT 2025

AK, 07 AUG 2025 to 02 OCT 2025