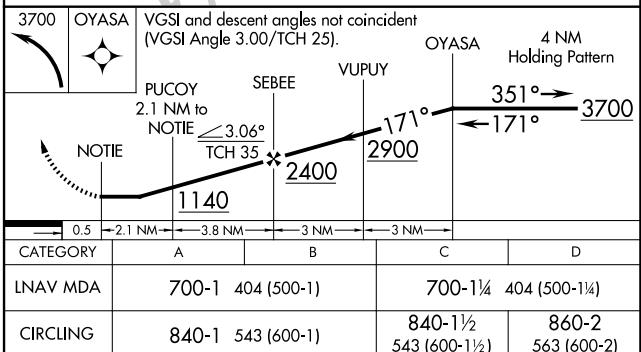
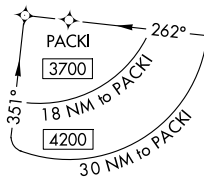
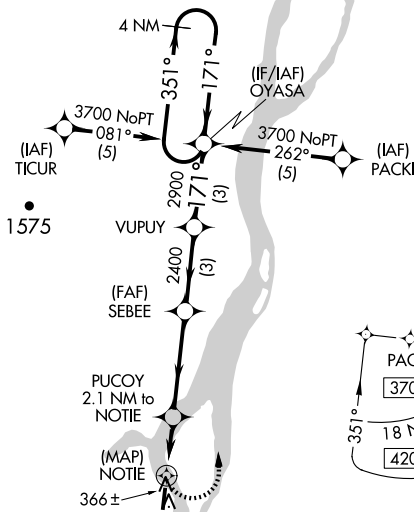
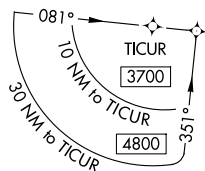
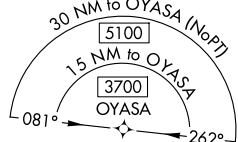


RNAV (GPS) RWY 17
ANV (ANV)(PANV)

T
A Rwy 17 helicopter visibility reduction below $\frac{3}{4}$ SM NA.

MISSED APPROACH: Climbing left turn to 3700 direct OYASA and hold, continue climb-in-hold to 3700.

AWOS-3P 133.55	ANCHORAGE CENTER 135.7 335.5	KENAI RADIO 122.4	UNICOM 122.7 (CTAF) 0
--------------------------	--	-----------------------------	---------------------------------



AK, 07 AUG 2025 to 02 OCT 2025