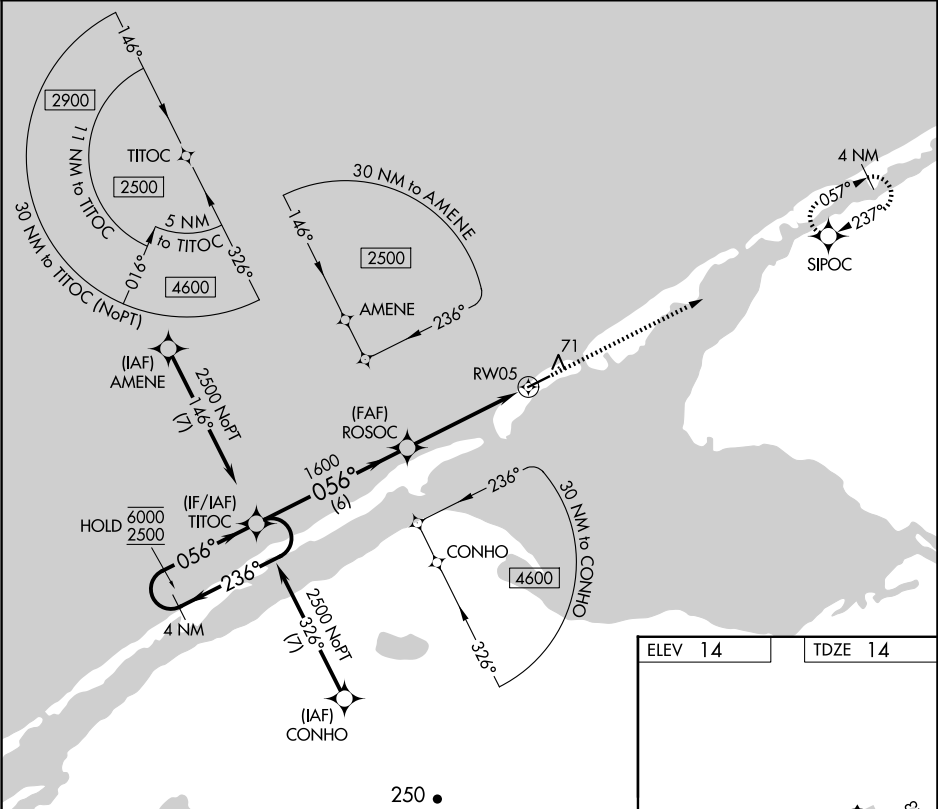


APP CRS	Rwy Ldg	4997
056°	TDZE	14
	Apt Elev	14

RNAV (GPS) RWY 5

SHISHMAREF (SHH) (PASH)

RNP AR APCH - GPS.		MISSED APPROACH: Climb to 2500 direct SIPOC and hold.	
AWOS-3P	ANCHORAGE CENTER	NOME RADIO	CTAF
121.1	119.2 263.0	122.4	123.0



4 NM Holding Pattern				VGSI and descent angles not coincident (VGSI Angle 3.00/TCH 25).		2500	SIPOC
6000	236°	TITOC	056°	056°	1600	ROSOC	1.3 NM to RWY05
2500	056°						RWY05
		6 NM	3.5 NM	1.3 NM			
CATEGORY	A	B	C	D			
LNNAV MDA	460-1	446 (500-1)	460-1 $\frac{3}{8}$	446 (500-1 $\frac{3}{8}$ )			
CIRCLING	460-1	480-1	480-1 $\frac{1}{2}$	580-2			
	446 (500-1)	466 (500-1)	466 (500-1 $\frac{1}{2}$ )	566 (600-2)			

