

NDB CMY

412

APP CRS

287°

Rwy Idg

4266

TDZE

831

Apt Elev

838

NDB RWY 29

SPARTA/FORT MC COY (CMY)

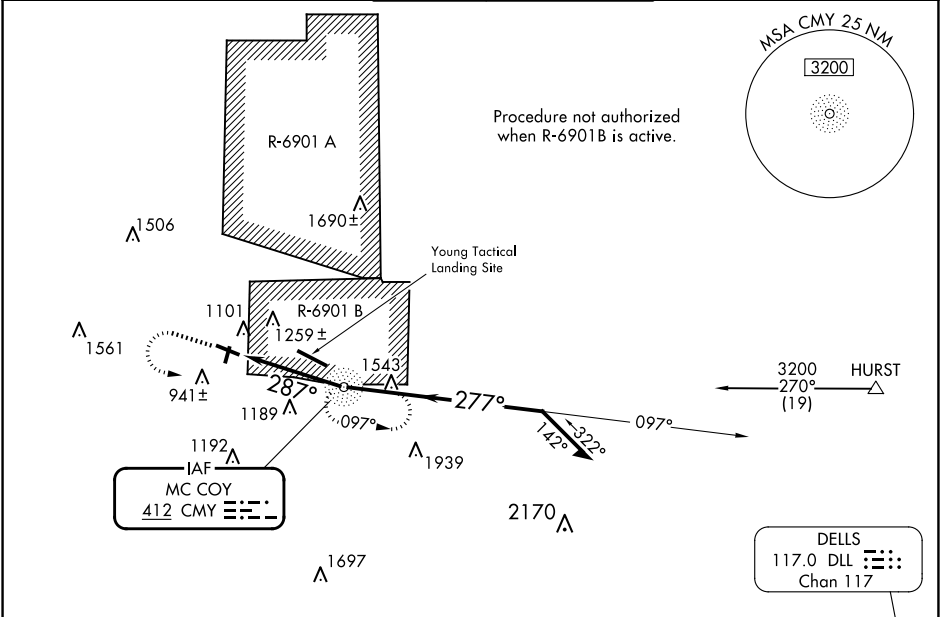
⚠

⚠

Circling to Rwy 19 NA at night. When local altimeter setting not received, use La Crosse altimeter setting and increase all MDA 80 feet and visibility S-29 Cat B ¼ mile and Cat C ½ mile, Circling Cat B and C ¼ mile. Helicopter visibility reduction below 1 SM not authorized.

MISSED APPROACH: Climb to 2100 then climbing left turn to 3200 direct CMY NDB and hold.

ASOS 119.775	VOLK APP CON ★ 135.25 244.875	SPARTA/MC COY TOWER ★ 124.6 254.375	GND CON 123.625	CTAF 124.6 0
-----------------	----------------------------------	--	--------------------	-----------------



ELEV 838

TDZE 831

REIL Rwys 11 and 29 0
MIRL Rwys 1-19 and 11-29 0
FAF to MAP 4.1 NM

Knots	60	90	120	150	180
Min:Sec	4:06	2:44	2:03	1:38	1:22

2100 3200 CMY				CMY NDB				Remain within 10 NM			
VGSI and descent angles not coincident (VGSI Angle 3.00/TCH 43).				≤ 3.56° TCH 40				097°			
287°				277°				3200			
4.1 NM				2400							
CATEGORY	A		B		C		D				
S-29	1560-1		729 (800-1)		1560-2 729 (800-2)		NA				
CIRCLING	1560-1		722 (800-1)		1620-2¼ 782 (800-2¼)		NA				

EC-3, 07 AUG 2025 to 04 SEP 2025

EC-3, 07 AUG 2025 to 04 SEP 2025