

LOC/DME I-TDF

108.7

Chan 24

APP CRS

060°

Rwy Idg

5702

TDZE

604

Apt Elev

609

ILS or LOC RWY 6

RALEIGH RGNL AT PERSON COUNTY (TDF)

▼ For inop ALS, increase S-LOC 6 visibility Cats C/D to 1½ SM and increase FIPR fix minimums S-LOC 6 visibility Cats C/D to 1 SM.

MALSR

MISSED APPROACH: Climb to 1500 then climbing left turn to 3000 on heading 021° and on RDU VORTAC R-356 to ALDAN INT/RDU 32.3 DME and hold, continue climb-in-hold to 3000.

AWOS-3

126.725

RALEIGH APP CON

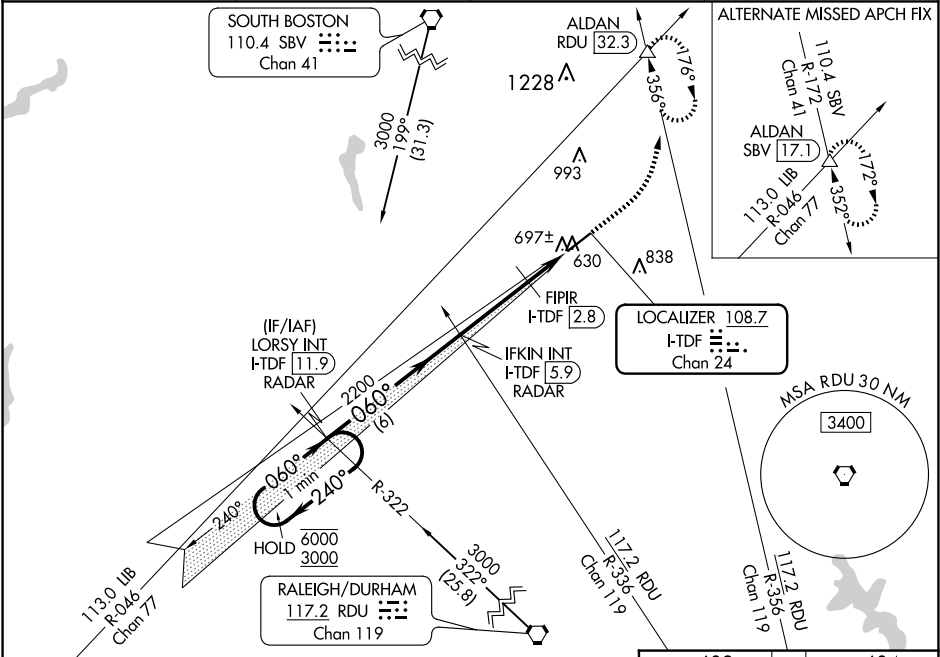
132.35 256.9

GCO

119.7

UNICOM

122.7 (CTAF) 0



One Minute Holding Pattern		LORSY INT I-TDF 11.9 RADAR		IFKIN INT I-TDF 5.9 RADAR		FIPR I-TDF 2.8		RDU R-356		ALDAN △		ELEV 609		TDZE 604		
6000 ← 240° 3000 → 060°		060°		2200		1220		hdg 021°								
GS 3.00° TCH 40								I-TDF 2.1		I-TDF 1						
		6 NM		3.1 NM		0.7 NM		1.1 NM								
CATEGORY	A	B		C		D										
S-ILS 6	804-½ 200 (200-½)															
S-LOC 6	1220-½	616 (700-½)		1220-1⅜		616 (700-1⅜)										
CIRCLING	1220-1	611 (700-1)		1300-2 691 (700-2)		1300-2¼ 691 (700-2¼)										
FIPR FIX MINIMUMS																
S-LOC 6	980-½	376 (400-½)		980-⅝		376 (400-⅝)										
CIRCLING	1080-1	471 (500-1)		1300-2 691 (700-2)		1300-2¼ 691 (700-2¼)										
REIL Rwy 24 0 MIRL Rwy 6-24 0																
FAF to MAP 4.9 NM																
Knots		60	90	120	150	180										
Min:Sec		4:54	3:16	2:27	1:58	1:38										