

WAAS

CH 45516

W18A

APP CRS

182°

Rwy ldg

3700

TDZE

72

Apt Elev

74

RNAV (GPS) RWY 18

HOLK FLD AT FOLEY MUNI (5R4)

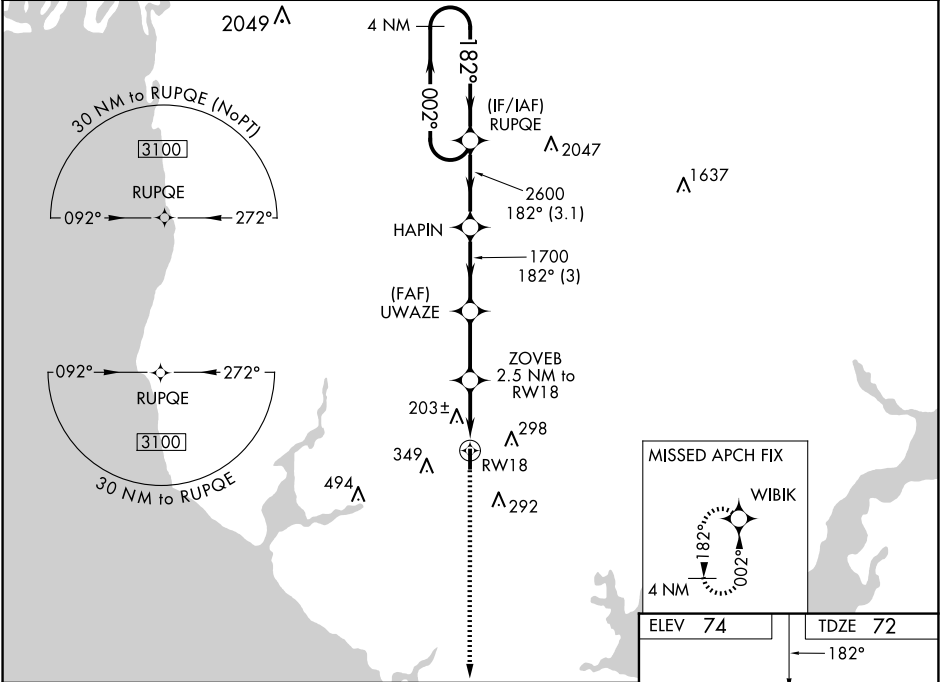
▼

NA

Baro-VNAV NA. DME/DME RNP-0.3 NA. Procedure NA at night. Helicopter visibility reduction below 1 SM NA. Use Fairhope altimeter setting. When not received, use Gulf Shores altimeter setting and increase LPV DA to 397 feet, LNAV/VNAV DA to 547 feet, and all MDA 20 feet; increase LNAV Cat C visibility 1/8 mile and Circling Cat C visibility 1/4 mile.

MISSED APPROACH: Climb to 3000 direct WIBIK and hold, continue climb-in-hold to 3000.

<div>QGF AWOS-3PT</div> <div>118.425</div>	<div>PENSACOLA APP CON</div> <div>118.6 380.6</div>	<div>UNICOM</div> <div>123.05 (CTAF) 0</div>
--	---	--



4 NM Holding Pattern		VGSI and RNAV glidepath not coincident (VGSI Angle 3.00/TCH 40).		3000	WIBIK
3100 ← 002° 182° →		HAPIN	UWAZE	ZOVEB 2.5 NM to RW18	*RNAV only
GP 3.00° TCH 54		2600	1700	*900	RW18
← 3.1 NM →		← 3 NM →	← 2.5 NM →	← 2.5 NM →	
CATEGORY	A	B	C	D	
LPV DA	393-1 321 (400-1)			NA	
LNAV/VNAV DA	543-1 471 (500-1)			NA	
LNAV MDA	480-1 408 (500-1)		480-1 408 (500-1)	NA	
CIRCLING	680-1 606 (700-1)		880-2 806 (900-2)	NA	

MIRL Rwy 18-36 0