

25219

Rwy Ldg	6669
TDZE	73
Apt Elev	76

RNAV (GPS) RWY 5
WILLISTON RGNL (X60)

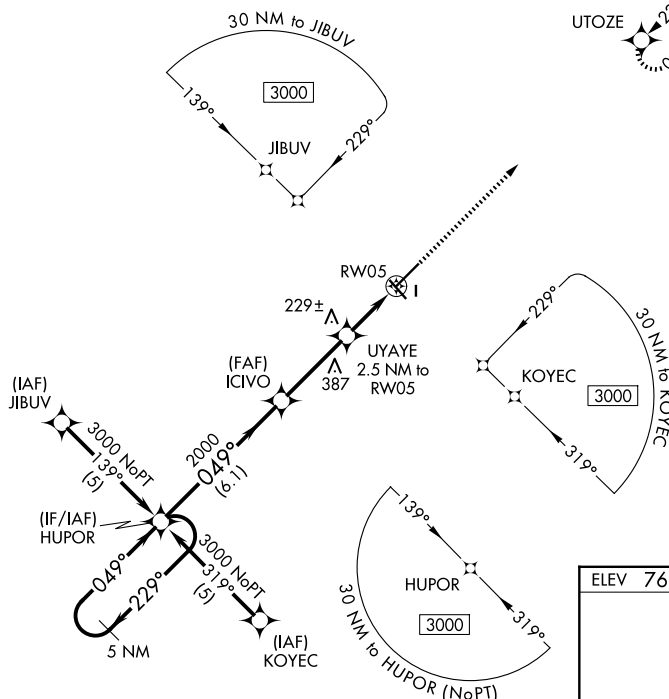
WILLISTON RGNL (X60)

T When local altimeter setting not received, use Ocala altimeter setting and increase all MDAs 60 feet and all Cat C visibilities $\frac{1}{4}$ SM. Circling Rwy 14, 32 NA at night. Rwy 5 helicopter
A NA visibility reduction below $\frac{3}{4}$ SM NA. Circling NA to Rwy 18 and 36.

MISSED APPROACH:
Climb to 3000 direct
UTOZE and hold.

JACKSONVILLE APP CON
118.6 251.15

UNICOM
122.975 (CTAF) **L**



ELEV 76		TDZE 73
---------	--	---------

5 NM Holding Pattern

HUPOR

VGSI and descent angles not coincident (VGSI Angle 3.00/TCH 38).

3000

229°

049°

ICVO

2000

UYAYE
2.5 NM to RW05

3.05°
TCH 45

900

1.2 NM to RW05

RW05

6.1 NM

3.3 NM

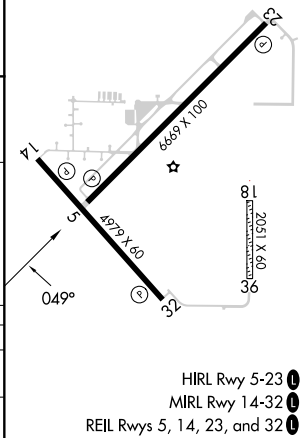
1.3

1.2

3000

UTOZE

CATEGORY	A	B	C	D
LNAV MDA	480-1	407 (500-1)	480-1¼ 407 (500-1¼)	NA
CIRCLING	520-1 444 (500-1)	640-1 564 (600-1)	840-2¼ 764 (800-2¼)	NA



29°21'N-82°28'W

WILLISTON RGNL (X60)

RNAV (GPS) RWY 5

SE-3, 07 AUG 2025 to 04 SEP 2025