

25219

RNAV (GPS) RWY 23
WILLISTON RGNL (X60)

MISSED APPROACH:
Climb to 3000 direct
HUPOR and hold.

UNICOM
122-975 (CTAF)

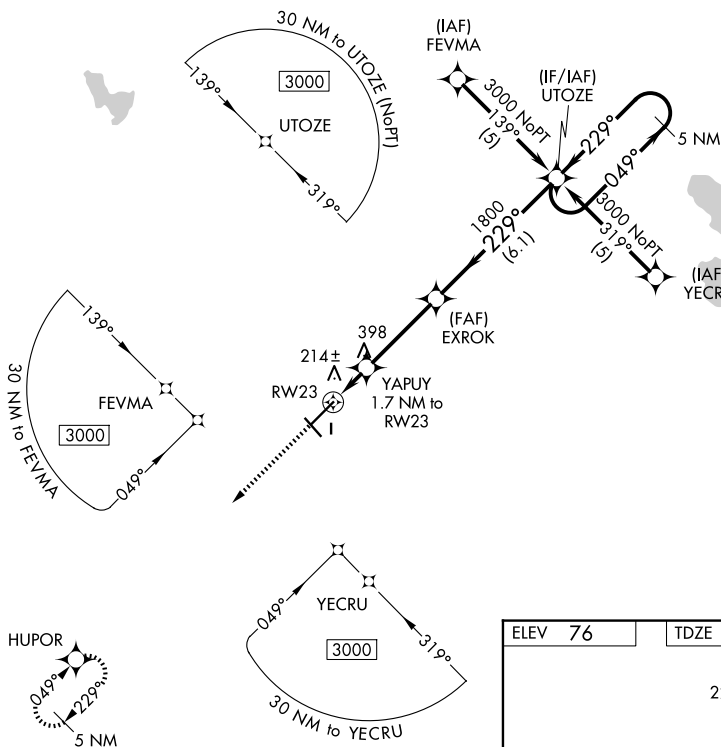


Diagram illustrating the runway layout at HIRL, showing Runway 5-23, Runway 14-32, and Runway 8-26. The diagram includes a compass rose indicating 229 degrees and a star symbol.

- Runway 5-23: 6689 x 100
- Runway 14-32: 4572 x 60
- Runway 8-26: 2051 x 60

Legend:

- HIRL Rwy 5-23 (1)
- MIRL Rwy 14-32 (1)
- REIL Rwy 5, 14, 23, and 32 (1)

WILLISTON RGNL (X60)
RNAV (GPS) RWY 23

SE-3, 07 AUG 2025 to 04 SEP 2025