

WAAS

CH **72999**

W15A

APP CRS

154°

Rwy Idg

5199

TDZE

4218

Apt Elev

4218

RNAV (GPS) RWY 15

KIT CARSON COUNTY (ITR)

RNP APCH - GPS.

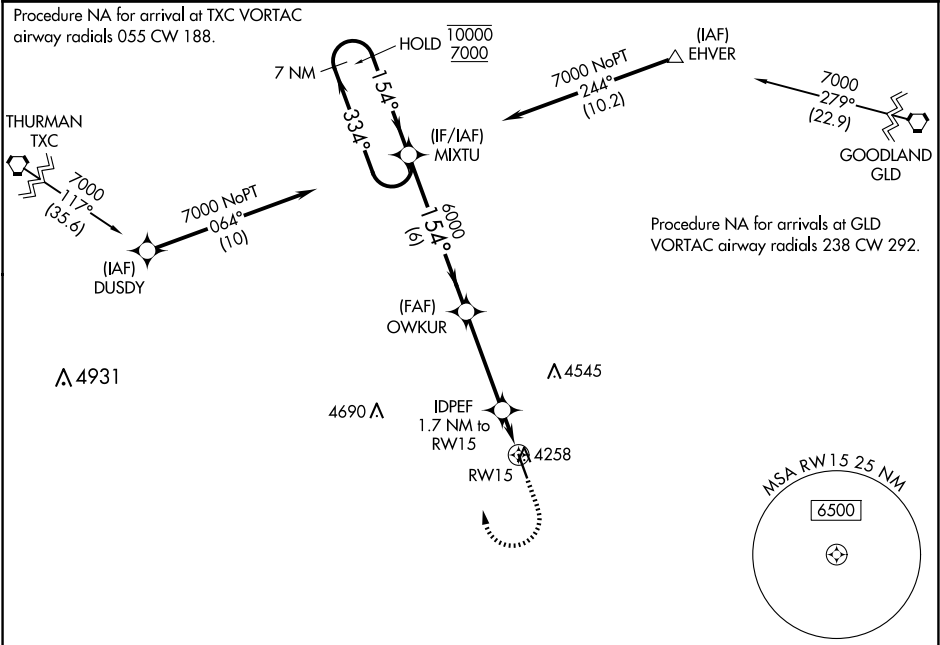
▼

▲

For uncompensated Baro-VNAV systems, LNAV/VNAV NA below -23°C or above 54°C.

MISSED APPROACH: Climb to 4700 then climbing right turn to 7000 direct MIXTU and hold.

ASOS 135.225	DENVER CENTER 132.7 226.675	UNICOM 122.8 (CTAF) 0
------------------------	---------------------------------------	---------------------------------



ELEV 4218

TDZE 4218

154°

51

5199 X 15

0.33 IAP

33

VGSI and RNAV glidepath not coincident (VGSI Angle 3.00/TCH 31).

7 NM Holding Pattern

MIXTU

OWKUR

IDPEF 1.7 NM to RW15

0.9 NM to RW15

RW15

COUGAR MOA

4700

7000

MIXTU

10000

7000

334°

154°

154°

6000

4800

6 NM

3.8 NM

0.9 NM

0.9 NM

GP 3.00° TCH 40

CATEGORY	A	B	C	D
LPV DA		4468-1	250 (300-1)	
LNAV/VNAV DA		4468-1	250 (300-1)	
LNAV MDA		4520-1	302 (400-1)	
CIRCLING	4580-1 362 (400-1)	4700-1 482 (500-1)	4860-1¾ 642 (700-1¾)	4860-2 642 (700-2)

MIRL Rwy 15-33 0

REIL Rwy 15 and 33 0