

LOC/DME I-OBG <b>111.9</b> Chan <b>56</b>	APP CRS <b>334°</b>	Rwy Idg TDZE Apt Elev	<b>5199</b> <b>4205</b> <b>4218</b>
---	------------------------	-----------------------------	---

LOC RWY 33  
KIT CARSON COUNTY (ITR)

ADF required. ▽ ▲	MISSED APPROACH: Climb to 7000 direct ITR NDB and hold, continue climb-in-hold to 7000.
-------------------------	---

ASOS <b>135.225</b>	DENVER CENTER <b>132.7 226.675</b>	UNICOM <b>122.8 (CTAF) 0</b>
------------------------	---------------------------------------	---------------------------------

ALTERNATE MISSED APCH FIX

GOODLAND GLD 115.1 Chan 98

4931

FLAGG Procedure NA for arrivals at FLAGG on V4 westbound.

7000 156° (18.7)

4545

4258 159° (1.7)

7000

115.1 GLD Chan 98

115.1 GLD Chan 98

LOCALIZER 111.9 I-OBG Chan 56

KIT CARSON 209 ITR

4690

31.9°

33.4°

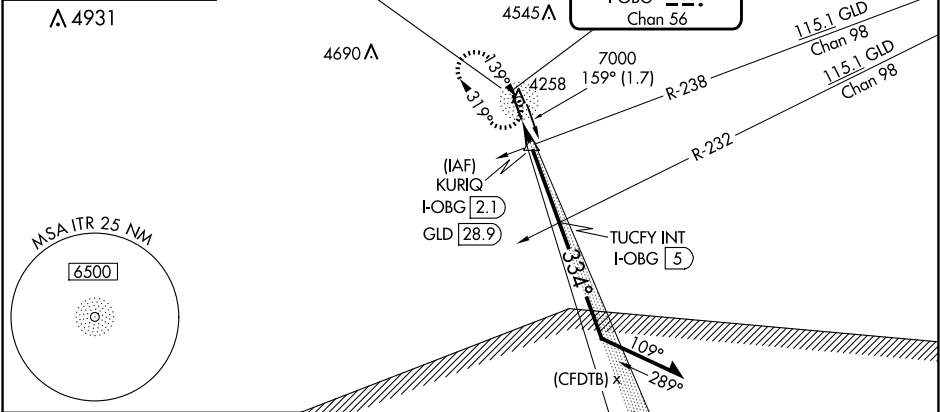
33.4°

10°

28°

15.4°

COUGAR MOA



ELEV 4218	TDZE 4205
-----------	-----------

51

5199 X 75

0.36 UP

33

334°

MIRL Rwy 15-33

REIL Rwys 15 and 33

FAF to MAP 4 NM

Knots	60	90	120	150	180
Min:Sec	4:00	2:40	2:00	1:36	1:20

7000 ITR

KURIQ I-OBG 2.1 GLD 28.9

Remain within 10 NM

154°

334°

6300

5500

3.00° TCH 32

1.4 NM

2.6 NM

CATEGORY	A	B	C	D
S-33	4680-1	475 (500-1)	4680-1 3/8	475 (500-1 3/8)
CIRCLING	4680-1 462 (500-1)	4700-1 482 (500-1)	4860-1 3/4 642 (700-1 3/4)	4860-2 642 (700-2)

SW-1, 07 AUG 2025 to 04 SEP 2025

SW-1, 07 AUG 2025 to 04 SEP 2025