

WAAS

CH **69210**

W23A

APP CRS

233°

Rwy Idg

5501

TDZE

872

Apt Elev

878

RNAV (GPS) RWY 23

LINCOLNTON-LINCOLN COUNTY RGNL (IPJ)

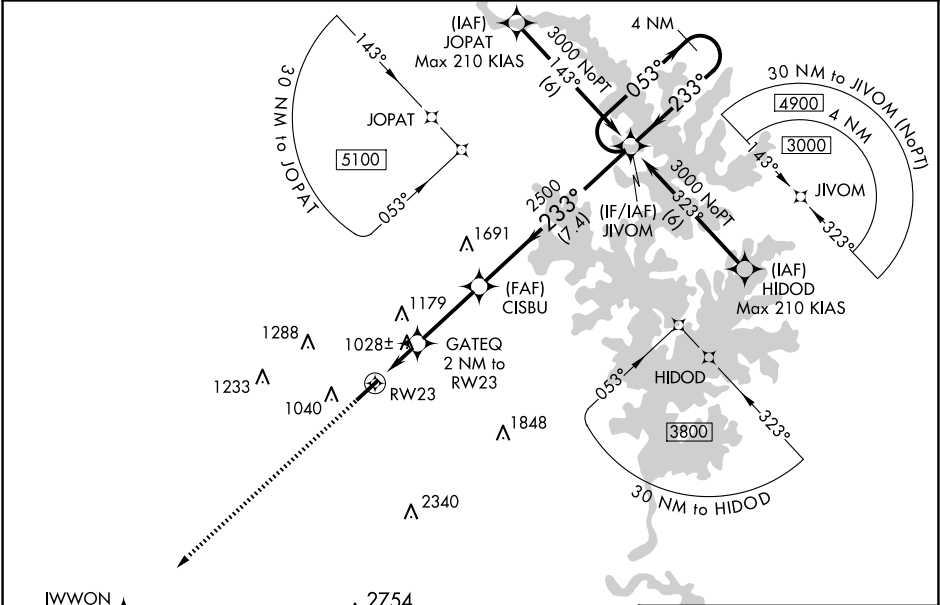
RNP APCH.

⚠

When local altimeter setting not received, use Charlotte altimeter setting: increase LPV DA to 1212 feet, LNAV/VNAV DA to 1204 feet and all visibilities $\frac{1}{8}$ SM; increase all MDAs 80 feet and visibility Cats C and D $\frac{1}{4}$ SM. Baro-VNAV and VDP NA when using Charlotte altimeter setting. Rwy 23 helicopter visibility reduction below $\frac{3}{4}$ SM NA. For uncompensated Baro-VNAV systems, LNAV/VNAV NA below -16°C or above 54°C.

MISSED APPROACH:
Climb to 3200 direct
IWWON and hold.

AWOS-3 119.675	CHARLOTTE APP CON 134.75 257.2	CLNC DEL (GCO) 124.9	UNICOM 123.05 (CTAF) 0
--------------------------	--	--------------------------------	---



ELEV **878**

TDZE **872**

3200

IWWON

* LNAV only

RW23

GATEQ
2 NM to RW23

CISBU
2500

JIVOM

1.2 NM

0.8 NM

3 NM

7.4 NM

1540 *

2500

3000

GP 3.00°

TCH 47

233° to RW23

0.3° LP

5700 x 100

CATEGORY	A	B	C	D
LPV DA	1149- $\frac{7}{8}$	277 (300- $\frac{7}{8}$)		
LNAV/VNAV DA	1141- $\frac{7}{8}$	269 (300- $\frac{7}{8}$)		
LNAV MDA	1280-1 408 (500-1)	1280-1 $\frac{1}{8}$ 408 (500-1 $\frac{1}{8}$)		
CIRCLING	1400-1 522 (600-1)	1440-1 562 (600-1)	1640-2 $\frac{1}{4}$ 762 (800-2 $\frac{1}{4}$)	1640-2 $\frac{1}{2}$ 762 (800-2 $\frac{1}{2}$)

REIL Rwys 5 and 23 **0**
MIRL Rwy 5-23 **0**