

JOJJO FIVE DEPARTURE (RNAV)

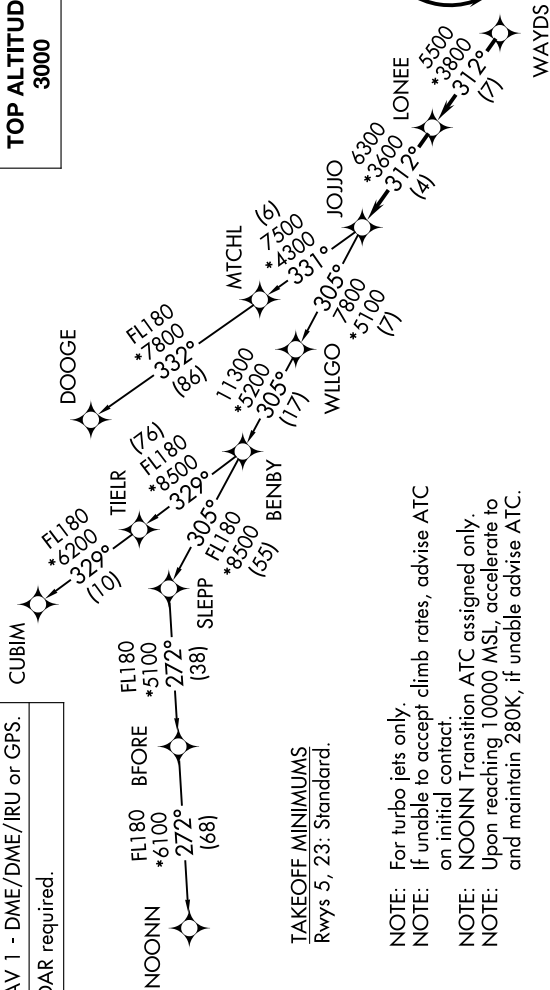
LINCOLNTON-LINCOLN COUNTY RGNL (IPJ)  
AL-6894 (FAA) LINCOLNTON, NORTH CAROLINA

SE-2, 07 AUG 2025 to 04 SEP 2025

RNAV 1 - DME/DME/IRU or GPS.  
RADAR required.

TOP ALTITUDE:  
3000

CHARLOTTE DEP CON  
134.75 257.2  
AWOS-3  
119.675  
CLNC DEL (GCO)  
124.9  
UNICOM (CTAF)  
123.05



TAKEOFF MINIMUMS  
Rwys 5, 23: Standard.

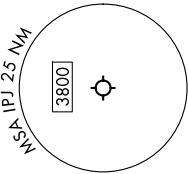
NOTE: For turbo jets only.  
NOTE: If unable to accept climb rates, advise ATC on initial contact.  
NOTE: NOONN Transition ATC assigned only.  
NOTE: Upon reaching 10000 MSL, accelerate to and maintain 280K, if unable advise ATC.

DEPARTURE ROUTE DESCRIPTION

TAKEOFF RUNWAY 5: Climb on heading 063° to 2000 before proceeding on course, then on heading assigned by ATC, thence. . . .  
TAKEOFF RUNWAY 23: Climb on heading 243° to 2800 before turning left, then on heading assigned by ATC, thence. . . .

. . . on RADAR vectors to WAYDS, then on depicted route to JOJJO. Then on assigned transition. Maintain 3000, expect filed altitude within 10 minutes after departure.

CUBIM TRANSITION (JOJJO5.CUBIM)  
DOOGE TRANSITION (JOJJO5.DOOGE)  
NOONN TRANSITION (JOJJO5.NOONN)



NOTE: Chart not to scale.

JOJJO FIVE DEPARTURE (RNAV)

SE-2, 07 AUG 2025 to 04 SEP 2025