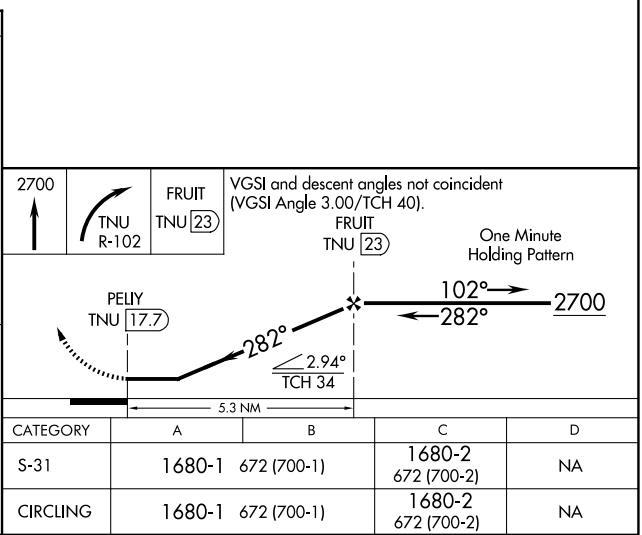
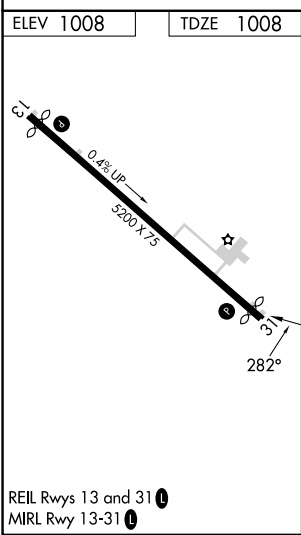
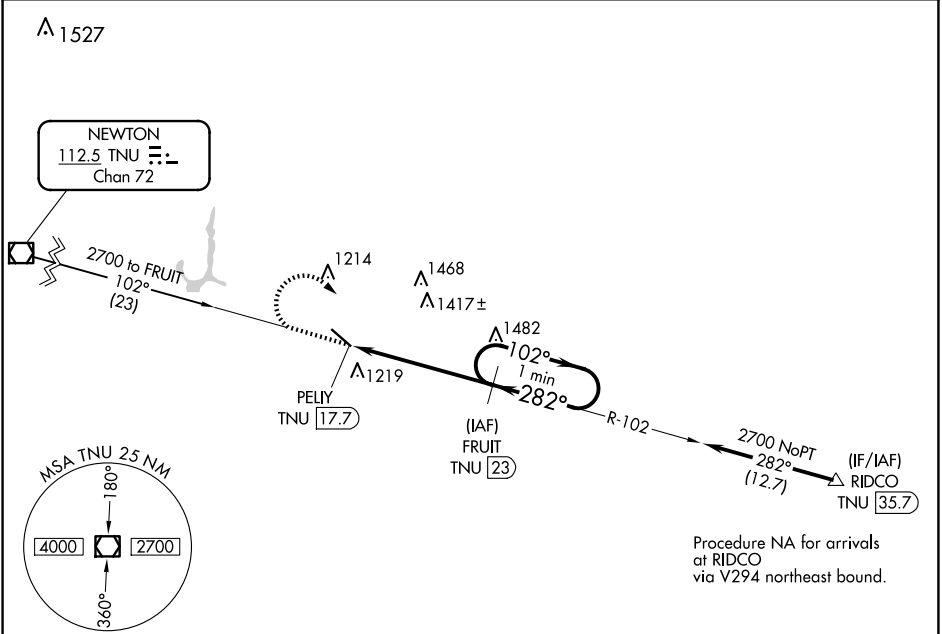


VOR/DME TNU	APP CRS	Rwy Idg	5000
112.5	282°	TDZE	1008
Chan 72		Apt Elev	1008

VOR/DME RWY 31
GRINNELL RGNL (GGI)

<p>⚠ When local altimeter setting not received, use Newton altimeter setting and increase all MDAs 40 feet. Visibility reduction by helicopters NA.</p>	<p>MISSED APPROACH: Climb to 2700 then right turn via TNU VOR/DME R-102 to FRUIT/TNU 23 DME and hold.</p>
---	---

AWOS-3 120.725	CHICAGO CENTER 127.05 282.35	UNICOM 122.8 (CTAF) 0
-------------------	---------------------------------	--------------------------



NC-3, 07 AUG 2025 to 04 SEP 2025

NC-3, 07 AUG 2025 to 04 SEP 2025