

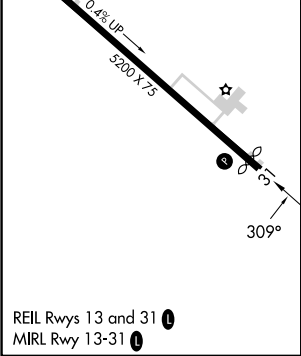
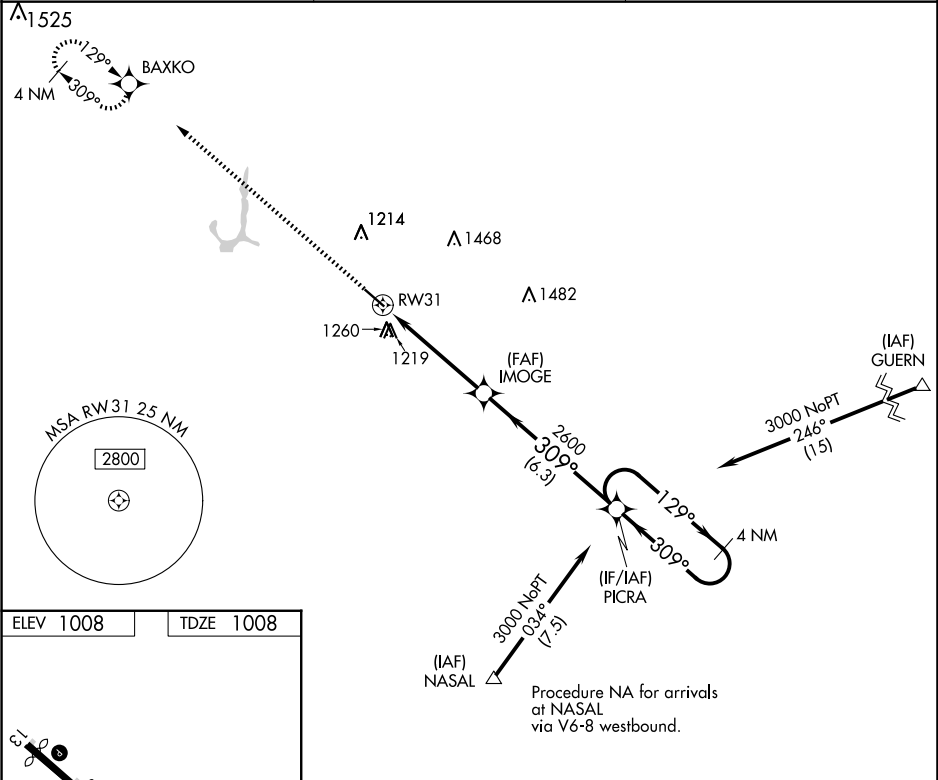
APP CRS	Rwy Idg	5000
309°	TDZE	1008
	Apt Elev	1008



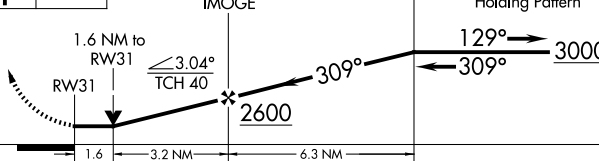
RNAV (GPS) RWY 31

GRINNELL RGNL (GGI)

RNP APCH - GPS.	MISSED APPROACH: Climb to 3000 direct BAXKO and hold.
<div><div>▼</div><div>⚠</div></div> When local altimeter setting not received, use Newton altimeter setting and increase all MDA 40 feet and LNAV visibility Cat C ½ SM. Rwy 31 helicopter visibility reduction below ¾ SM NA. VDP NA when using Newton altimeter setting.	

AWOS-3 120.725	CHICAGO CENTER 127.05 282.35	UNICOM 122.8 (CTAF) 0
-------------------	---------------------------------	--------------------------



3000	BAXKO				
					
					
CATEGORY	A		B	C	D
LNAV MDA	1560-1 552 (600-1)		1560-1½ 552 (600-1½)	NA	
CIRCLING	1620-1 612 (700-1)		1620-1¾ 612 (700-1¾)	NA	

NC-3, 07 AUG 2025 to 04 SEP 2025

NC-3, 07 AUG 2025 to 04 SEP 2025