

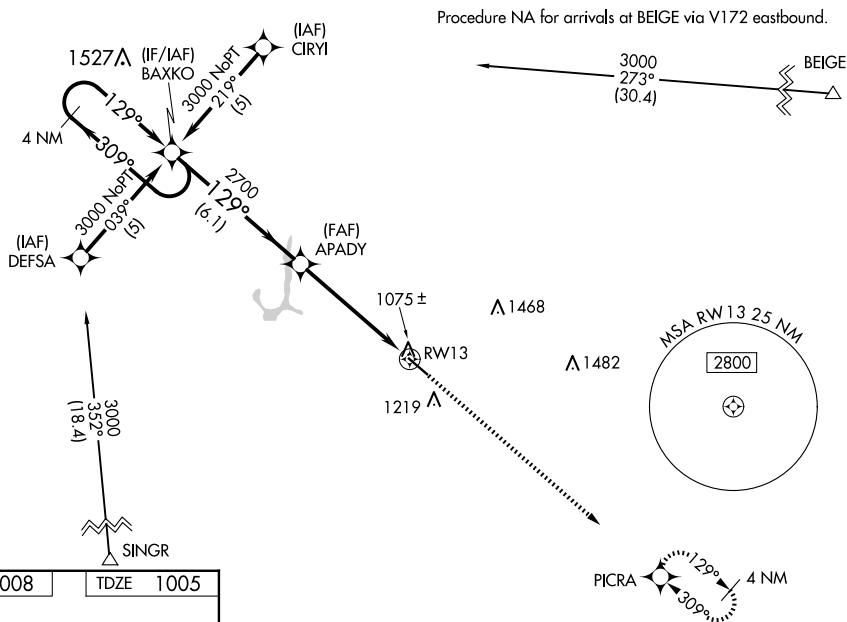
WAAS CH 58107 W13A	APP CRS 129°	Rwy Idg 5000 TDZE 1005 Apt Elev 1008
--	------------------------	---

RNAV (GPS) RWY 13
GRINNELL RGNL (GGT)

⚠ When local altimeter setting not received, use Newton altimeter setting and increase all DAs 38 feet and all MDAs 40 feet, increase LPV and LNAV/VNAV visibility $\frac{1}{4}$ mile all Cats and LNAV Cat C visibility $\frac{1}{4}$ mile. Baro-VNAV NA when using Newton altimeter setting. For uncompensated Baro-VNAV systems, LNAV/VNAV NA below -17°C (2°F) or above 54°C (130°F).
⚠ Visibility reduction by helicopters NA. DME/DME RNP-0.3 NA.

MISSED APPROACH: Climb to 3000 direct PICRA and hold.

AWOS-3 120.725	CHICAGO CENTER 127.05 282.35	UNICOM 122.8 (CTAF) ①
--------------------------	--	---------------------------------



ELEV	1008		TDZE	1005
------	------	--	------	------

