

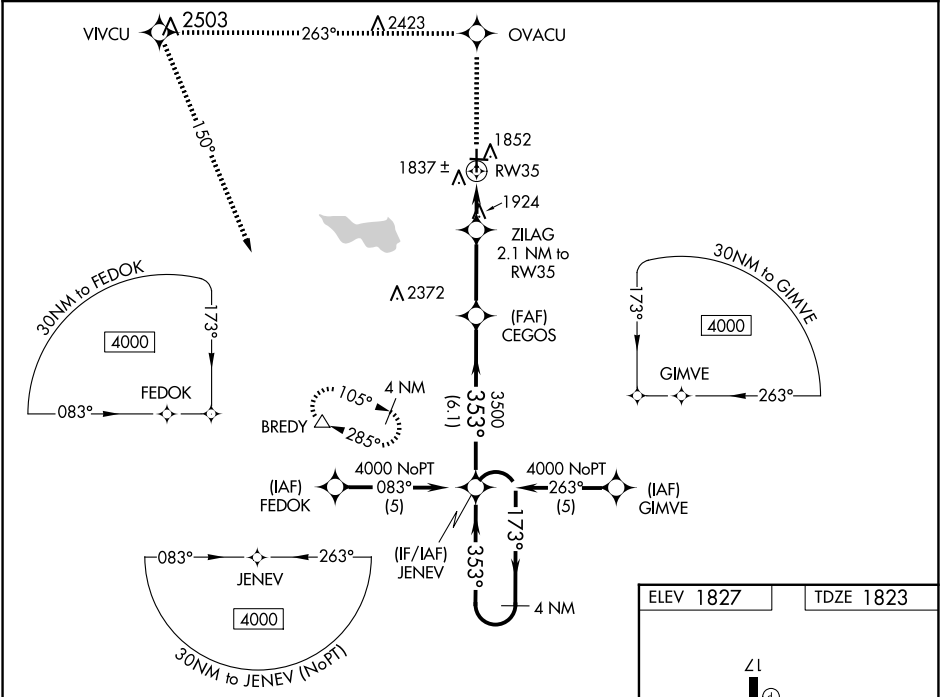
WAAS CH 49108 W35A	APP CRS 353°	Rwy Idg TDZE Apt Elev	4605 1823 1827
--	------------------------	-----------------------------	---

RNAV (GPS) RWY 35

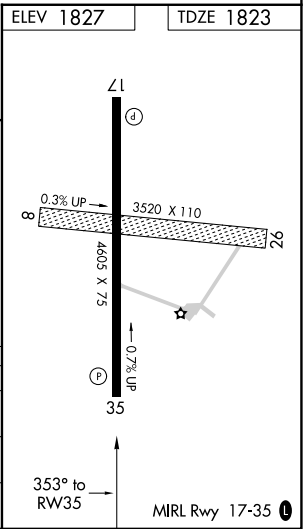
CURTIS FLD (BBD)

RNP APCH.	<p>For uncompensated Baro-VNAV systems, LNAV/VNAV NA below -18°C (0°F) or above 54°C (130°F). When local altimeter setting not received, use Junction altimeter setting and increase all DA/MDA 120 feet, increase LPV, LNAV/VNAV all Cats visibility ½ mile, LNAV Cat C visibility ¼ mile. Baro-VNAV NA when using Junction altimeter setting. Rwy 35 helicopter visibility reduction below ¾ SM NA.</p>	MISSED APPROACH: Climb to 4000 direct OVACU and via 263° track to VIVCU and left turn via 150° track to BREDY and hold.
-----------	---	---

AWOS-3 118.375	HOUSTON CENTER 132.35 317.5	UNICOM 122.8 (CTAF)
--------------------------	---------------------------------------	-------------------------------



4000	OVACU	tr 263°	VIVCU	tr 150°	BREDY	JENEV	4 NM Holding Pattern
*LNAV only.			ZILAG 2.1 NM to RW35		CEGOS		
			RW35				
			2500*		3500		GP 3.00° TCH 48
			2.1 NM	3 NM	6.1 NM		
CATEGORY	A	B	C	D			
LPV DA	2073-1	250 (300-1)		NA			
LNAV/VNAV DA	2107-1	284 (300-1)		NA			
LNAV MDA	2240-1	417 (500-1)	2240-1¼ 417 (500-1¼)	NA			



SC-3, 07 AUG 2025 to 04 SEP 2025

SC-3, 07 AUG 2025 to 04 SEP 2025