

APP CRS	Rwy Idg	<b>3900</b>
<b>046°</b>	TDZE	<b>989</b>
	Apt Elev	<b>989</b>

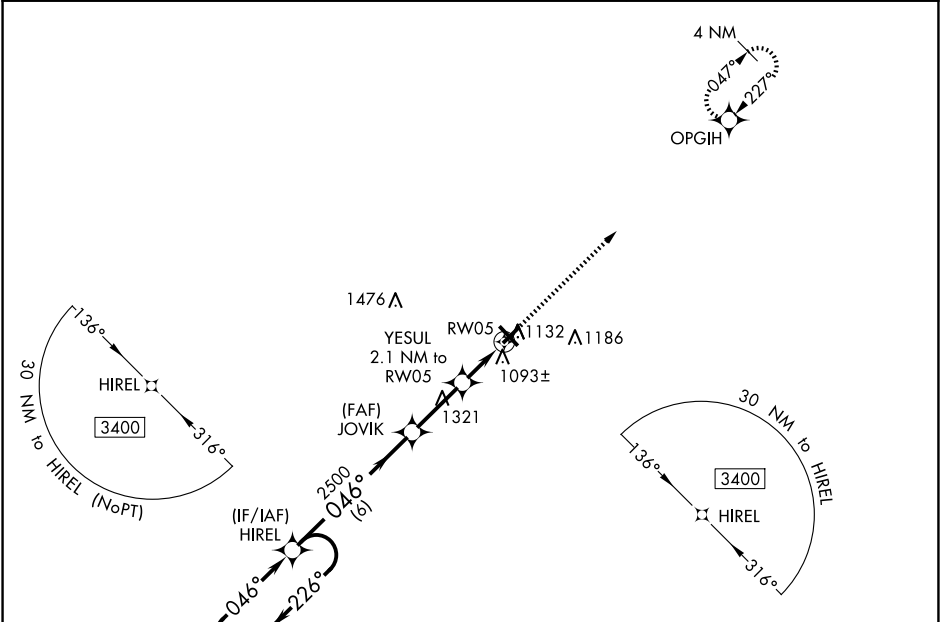
RNAV (GPS) RWY 5

BURNETT COUNTY (RZN)

DME/DME RNP-0.3 NA. Helicopter visibility reduction below 1 SM NA.  
Night Landing: Rwy 5, 23, 32 NA. When local altimeter setting not received, use Rush City, MN altimeter setting and increase all MDA 80 feet; increase LNAV Cat C/D visibility ⅓ mile, and Circling Cat C/D visibility ¼ mile.

MISSED APPROACH:  
Climb to 3400 direct OPGIH and hold.

AWOS-3 <b>118.325</b>	MINNEAPOLIS CENTER <b>121.05 235.775</b>	UNICOM <b>122.8</b> (CTAF) <b>1</b>
--------------------------	---	--



4 NM Holding Pattern

3400

226°

046°

HIREL

VGSI and descent angles not coincident (VGSI Angle 3.50/TCH 31).

JOVIK

2500

046°

YESUL 2.1 NM to RWY 5

RWY 5

1680

3.00° TCH 40

3400

OPGIH

6 NM

2.5 NM

2.1 NM

CATEGORY	A	B	C	D
LNAV MDA	1360-1 371 (400-1)			
CIRCLING	1440-1 451 (500-1)		1540-1½ 551 (600-1½)	1680-2¼ 691 (700-2¼)

ELEV 989

TDZE 989

1

2

3

4

5

6

7

8

9

10

11

12

13

14

15

16

17

18

19

20

21

22

23

24

25

26

27

28

29

30

31

32

33

34

35

36

37

38

39

40

41

42

43

44

45

46

47

48

49

50

51

52

53

54

55

56

57

58

59

60

61

62

63

64

65

66

67

68

69

70

71

72

73

74

75

76

77

78

79

80

81

82

83

84

85

86

87

88

89

90

91

92

93

94

95

96

97

98

99

100

5000 X 75

3900 X 75

046° to RWY 5

SIREN, WISCONSIN  
Orig 30APR15

45°49'N-92°22'W

BURNETT COUNTY (RZN)  
RNAV (GPS) RWY 5

EC-3, 07 AUG 2025 to 04 SEP 2025

EC-3, 07 AUG 2025 to 04 SEP 2025