

APP CRS
318°

Rwy Idg
TDZE
Apt Elev

4660
988
989

RNAV (GPS) RWY 32

BURNETT COUNTY (RZN)

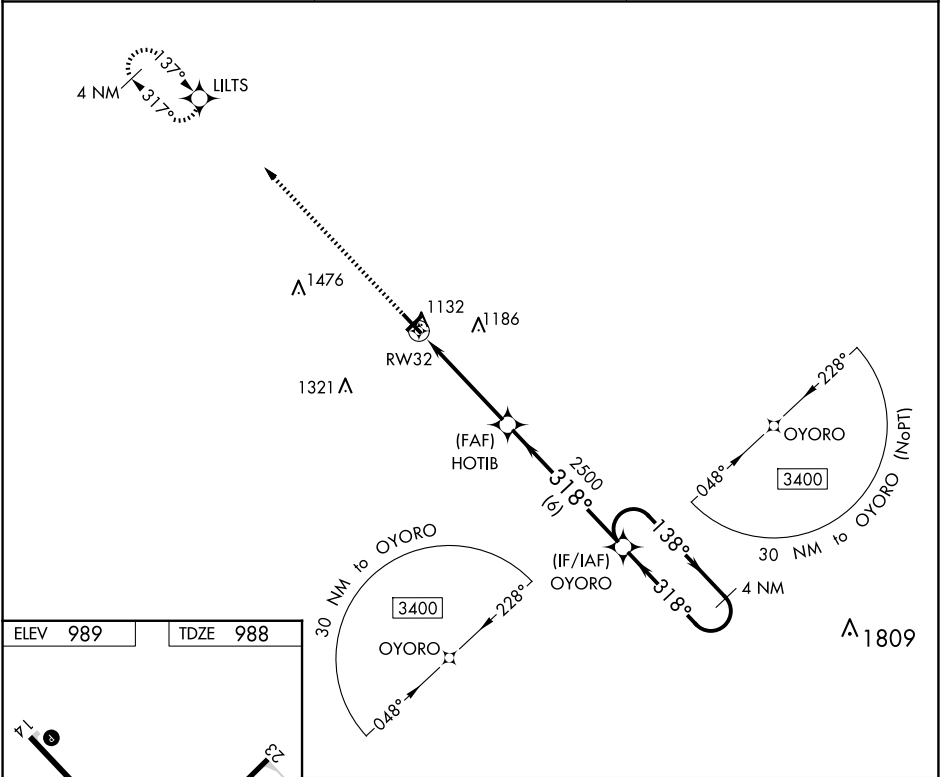
⚠

DME/DME RNP-0.3 NA. When local altimeter setting not received, use Rush City, MN altimeter setting and increase all MDA 80 feet; increase LNAV Cat C/D visibility ¼ mile, and Circling Cat C/D visibility ¼ mile. Helicopter visibility reduction below 1 SM NA. Night landing: Rwy 5, 23, 32 NA.

MISSED APPROACH:

Climb to 3400 direct LILTS and hold.

AWOS-3 118.325	MINNEAPOLIS CENTER 121.05 225.775	UNICOM 122.8 (CTAF) 0
-------------------	--------------------------------------	--------------------------



ELEV 989

TDZE 988

5000 X 75

3900 X 75

5

23

32

318° to RW32

3400

LILTS

VGSI and descent angles not coincident (VGSI Angle 4.00/TCH 38).

4 NM Holding Pattern

HOTIB

OYORO

138°

318°

3400

2500

3.00°

TCH 40

4.6 NM

6 NM

CATEGORY	A	B	C	D
LNAV MDA	1 440-1	452 (500-1)	1 440-1 3/8	452 (500-1 3/8)
CIRCLING	1 440-1	451 (500-1)	1 540-1 1/2 551 (600-1 1/2)	1 680-2 1/4 691 (700-2 1/4)

REIL Rws 5, 23, 14 and 32 0

MIRL Rws 5-23 and 14-32 0

EC-3, 07 AUG 2025 to 04 SEP 2025

EC-3, 07 AUG 2025 to 04 SEP 2025