

APP CRS	Rwy Idg	3900
226°	TDZE	989
	Apt Elev	989

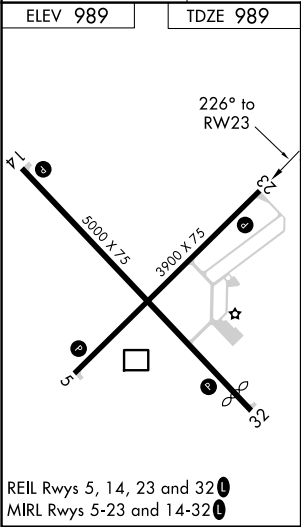
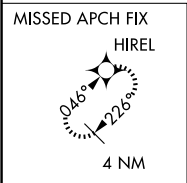
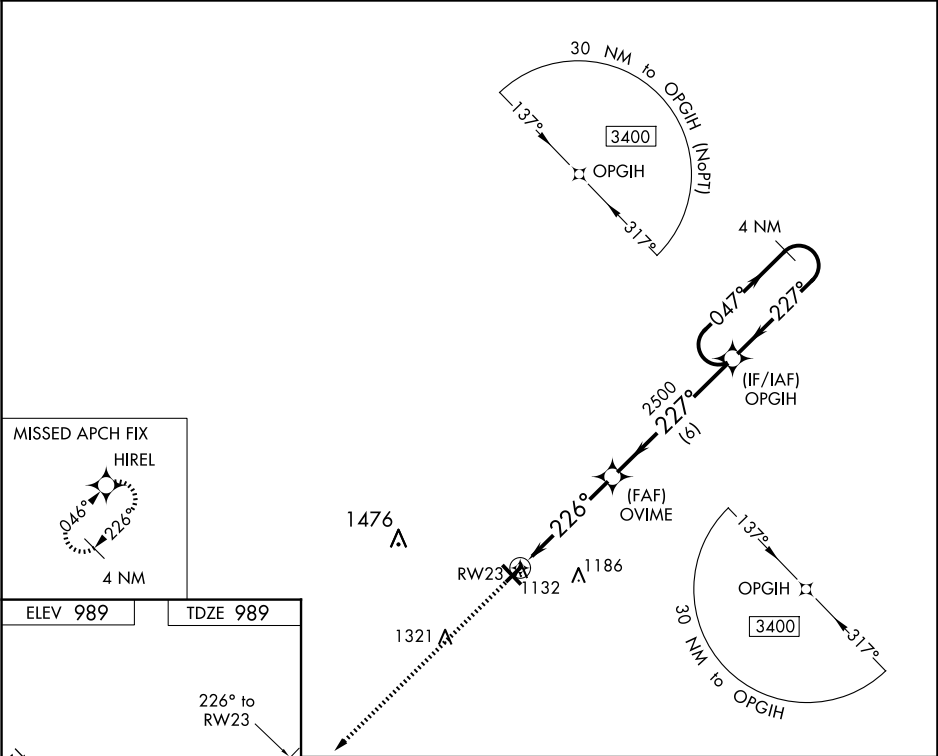
RNAV (GPS) RWY 23

BURNETT COUNTY (RZN)

⚠ DME/DME RNP-0.3 NA. When local altimeter setting not received, use Rush City, MN altimeter setting and increase all MDA 80 feet; increase LNAV Cat C/D visibility 1/8 mile, and Circling Cat C/D visibility 1/4 mile. Helicopter visibility reduction below 1 SM NA. Night landing: Rwy 5, 23, 32, NA.

MISSED APPROACH: Climb to 3400 direct HIREL and hold.

AWOS-3 118.325	MINNEAPOLIS CENTER 121.05 235.775	UNICOM 122.8 (CTAF) 0
-------------------	--------------------------------------	---------------------------------



3400	HIREL	VGSI and descent angles not coincident (VGSI Angle 3.00/TCH 27).				OPGIH	4 NM Holding Pattern
CATEGORY	A		B		C		D
LNAV MDA	1440-1 451 (500-1)		1440-1⅜ 451 (500-1⅜)				
CIRCLING	1440-1 451 (500-1)		1540-1½ 551 (600-1½)		1680-2¼ 691 (700-2¼)		

EC-3, 07 AUG 2025 to 04 SEP 2025

EC-3, 07 AUG 2025 to 04 SEP 2025