

APP CRS	Rwy Idg	5752
213°	TDZE	11
	Apt Elev	12

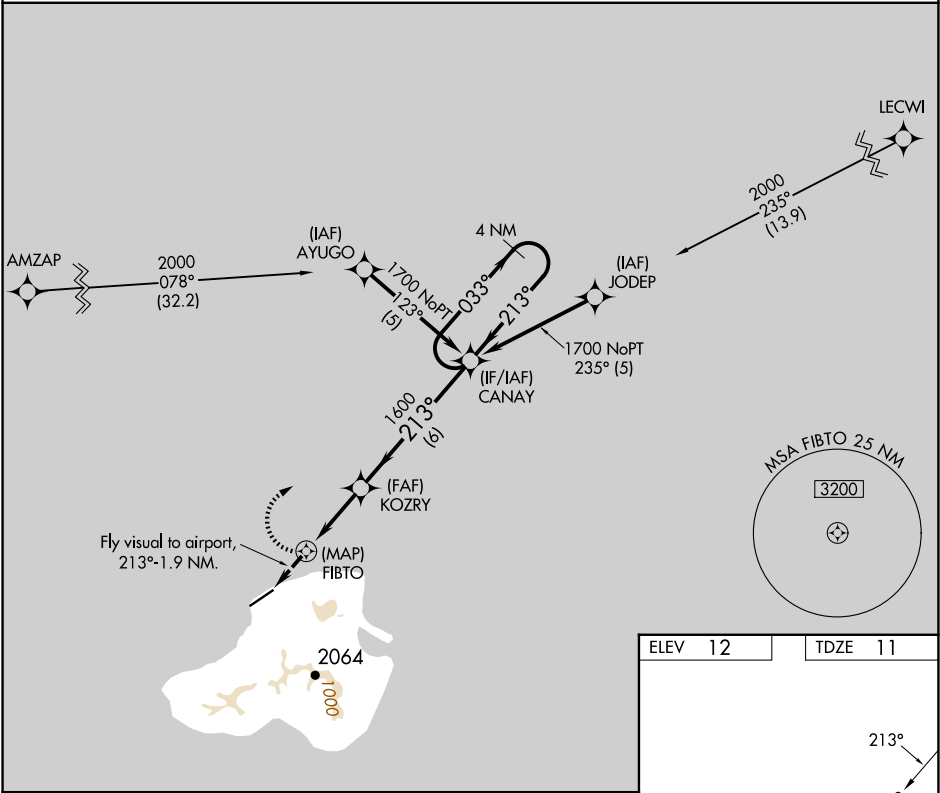
RNAV (GPS) RWY 23

KOSRAE (TTK)(PTSA)

Circling not authorized southeast of Rwy 5-23. Obtain local altimeter setting on CTA^F; when not received, procedure not authorized. DME/DME RNP-0.3 NA. No controlled airspace below 5500.

MISSED APPROACH: Climbing right turn to 1700 direct CANAY WP and hold.

KOSRAE RADIO
123.6 (CTAF) 0



1700

CANAY

Fly visual to airport, 213°-1.9 NM.

COZRY

FIBTO

1600

213°

033°

1700

4 NM Holding Pattern

1.9 NM

3 NM

6 NM

CATEGORY	A	B	C	D
LNNAV MDA	800-2	789 (800-2)	800-2¼ 789 (800-2¼)	800-2½ 789 (800-2½)
CIRCLING	800-2	788 (800-2)	800-2¼ 788 (800-2¼)	800-2½ 788 (800-2½)

ELEV 12

TDZE 11

213°

5752 X 150

5

23

REIL Rwy 5-23 0

REIL Rwy 5 and 23 0

PAC, 07 AUG 2025 to 02 OCT 2025

PAC, 07 AUG 2025 to 02 OCT 2025