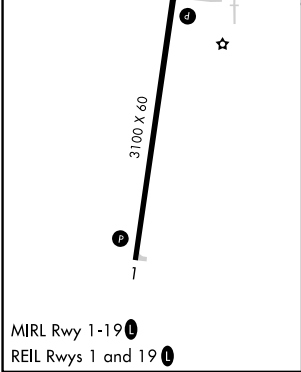
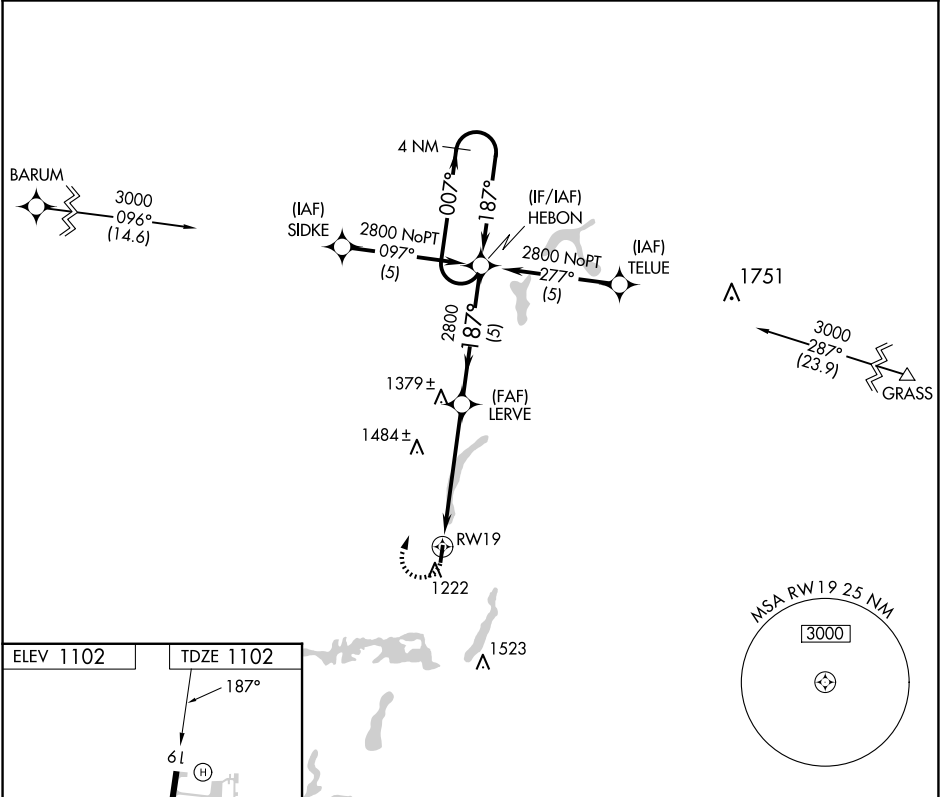


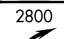
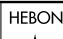
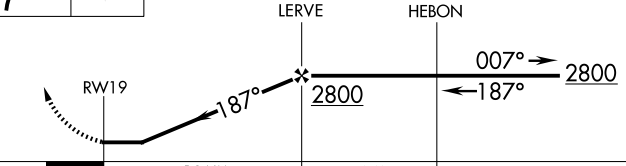

APP CRS	Rwy Ldg	3100
187°	TDZE	1102
	Apt Elev	1102

RNAV (GPS) RWY 19
SOLON SPRINGS MUNI (OLG)

RNP APCH.	MISSED APPROACH: Climbing right turn to 2800 direct HEBON WP and hold.
Straight-in Rwy 19 NA at night, Circling Rwy 19 NA at night. Rwy 19 helicopter visibility reduction below 1 SM NA.	

AWOS-3 119.6	DULUTH APP CON 125.45 233.7	CTAF 122.9
-----------------	--------------------------------	---------------



		Visual Segment - Obstacles.		4 NM Holding Pattern
				
CATEGORY	A	B	C	D
LNAV MDA	1800-1	698 (700-1)	1800-2 698 (700-2)	NA
 CIRCLING	1800-1	698 (700-1)	1800-2 698 (700-2)	NA