

WAAS CH 58326 W11A	APP CRS 110°	Rwy Idg TDZE Apt Elev 8900 7096 7096
--	------------------------	--

RNAV (GPS) RWY 11

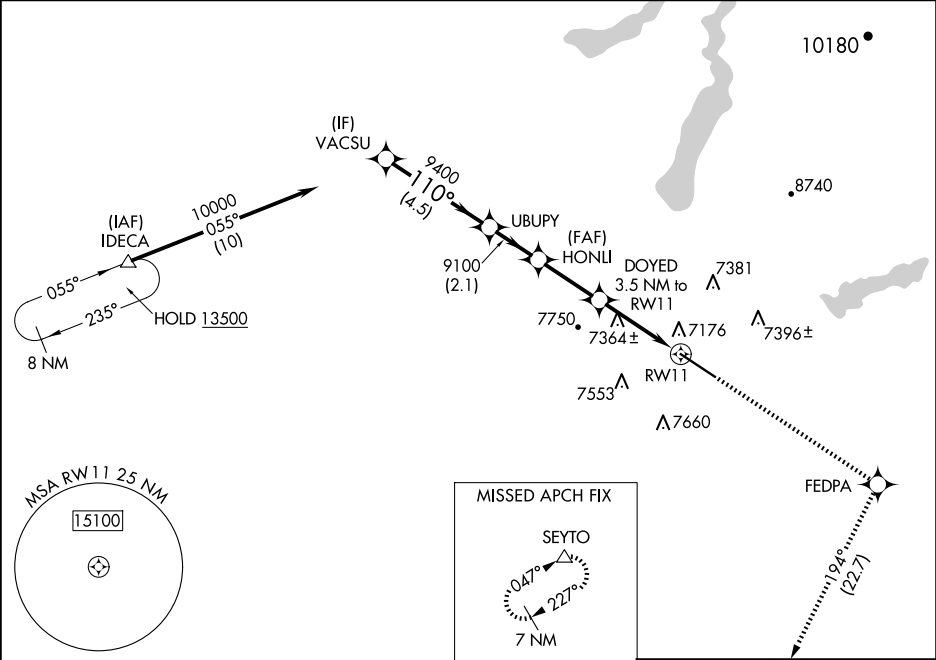
RALPH WENZ FLD (PNA)

▼ Baro-VNAV NA. When local altimeter setting not received, use Big Piney altimeter setting and increase LPV DA to 7404 feet and all visibilities ¼ SM; increase LNAV/VNAV DA to 7413 feet and all visibilities ¼ SM; increase all MDA 60 feet and LNAV Cat C/D visibility ¼ SM. Circling NA south of Rwy 11/29. DME/DME RNP- 0.3 NA. VDP NA with Big Piney altimeter setting.

ODALS

MISSED APPROACH: Climb to 10000 direct FEDPA and on track 194° to SEYTO and hold.

AWOS-3 118.325	SALT LAKE CENTER 128.35 239.25	UNICOM 122.8 (CTAF) 0
--------------------------	--	---------------------------------



VGSI and RNAV glidepath not coincident (VGSI Angle 2.83/TCH 40).				10000	FEDPA	tr 194°	SEYTO	ELEV 7096	TDZE 7096
VACSU				UBUPY	HONLI	DOYED	*LNAV only.		
10000				9400	9100	3.5 NM to RW11			
GP 3.00° TCH 55°						*1.5 NM to RW11	RW11		
4.5 NM				2.1 NM	2.6 NM	2 NM	1.5 NM		
CATEGORY	A		B		C		D		
LPV DA			7346-¾		250 (300-¾)				
LNAV/VNAV DA			7355-¾		259 (300-¾)				
LNAV MDA	7620-1		524 (600-1)		7620-1½		524 (600-1½)		
CIRCLING	7640-1		544 (600-1)		7840-2¼ 744 (800-2¼)		7980-3 884 (900-3)		

110°

10000

9400

9100

*8260

4.5 NM

2.1 NM

2.6 NM

2 NM

1.5 NM

*LNAV only.

DOYED 3.5 NM to RW11

*1.5 NM to RW11

RW11

110°

10000

9400

9100

*8260

4.5 NM

2.1 NM

2.6 NM

2 NM

1.5 NM

*LNAV only.

DOYED 3.5 NM to RW11

*1.5 NM to RW11

RW11

MIRL Rwy 11-29 0

REIL Rwys 11 and 29 0