

WAAS CH 53730 W17A	APP CRS 172°	Rwy Idg 3909 TDZE 1738 Apt Elev 1739
--	------------------------	---

RNAV (GPS) RWY 17

BRUCE FLD (E30)

▼

Baro-VNAV NA.

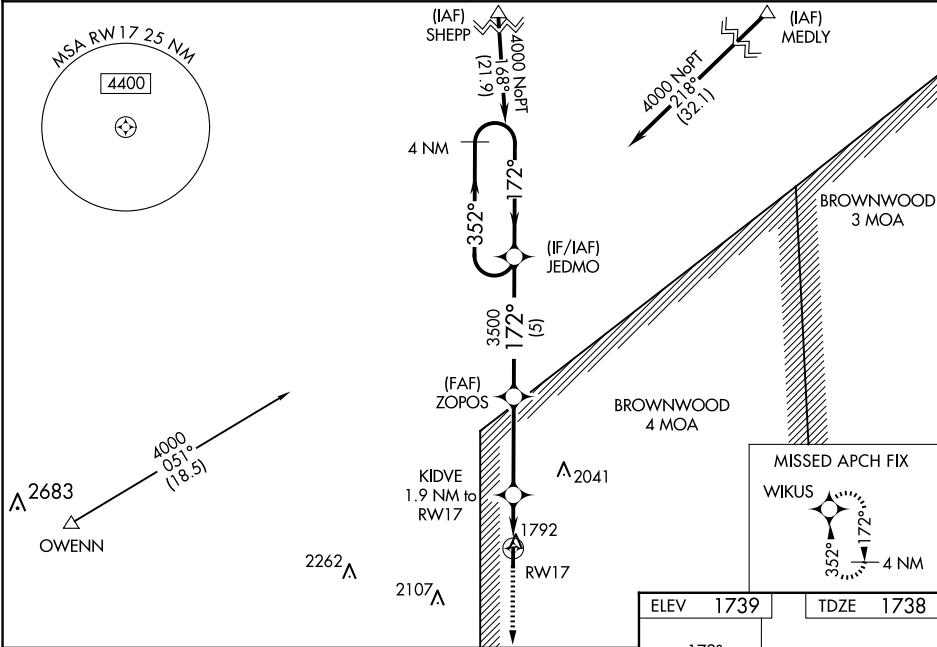
⚠ NA

DME/DME RNP-0.3 NA.

Use San Angelo altimeter setting, when not received use Brady altimeter setting and increase all DA 15 feet and all MDA 20 feet, and increase LPV and LNAV/VNAV all Cats visibility 1/8 mile.

MISSED APPROACH:
Climb to 4000 direct
WIKUS and hold.

SAN ANGELO APP CON ★ 125.35 354.1	CTAF 122.9 0
---	------------------------



4 NM Holding Pattern

JEDMO

ZOPOS

4000

3500

3500

KIDVE 1.9 NM to RW17

RW17

*2380

*LNAV only.

GP 3.00°

TCH 40

5 NM

3.5 NM

1.9 NM

CATEGORY	A	B	C	D
LPV DA	2089-1 1/8	351 (400-1 1/8)		NA
LNAV/VNAV DA	2089-1 1/8	351 (400-1 1/8)		NA
LNAV MDA	2160-1	422 (500-1)		NA
CIRCLING	2220-1	481 (500-1)		NA

ELEV 1739

TDZE 1738

172°

ZL

1790

3909 x 60

35

MIRL Rwy 17-35 0