

APP CRS	Rwy Ldg	2150
181°	TDZE	708
	Apt Elev	708

GPS RWY 18

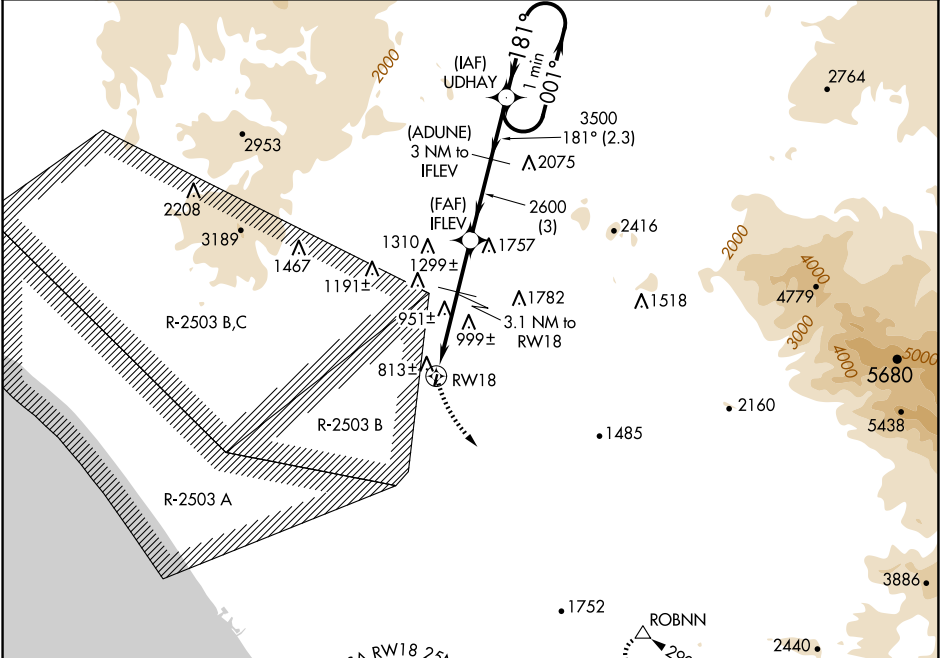
FALLBROOK COMMUNITY AIRPARK (L18)

⚠

Circling NA west of Rwy 18-36. When local altimeter setting not received, use Miramar MCAS (Joe Foss Fld) altimeter setting and increase all MDAs 120 feet.

MISSED APPROACH: Climbing left turn to 5000 direct ROBNN WP and hold.

AWOS-3P 118.425	SOCAL APP CON 127.3 323.0	CTAF 123.05 0
--------------------	------------------------------	------------------



ELEV 708

TDZE 708

181°

81

2150 X 60

0.6% UP

36

MIRL Rwy 18-36 0

MSA RW18 25NM

7300

5000

ROBNN

△

UDHAY

One Minute Holding Pattern

001°

4000

181°

3500

2600

1840*

3.1 NM to RW18

1.9 NM

3 NM

2.3 NM

*1920 when using Miramar altimeter setting.

CATEGORY	A	B	C	D
S-18	1260-1	552 (600-1)	NA	
CIRCLING	1260-1	1380-1	NA	
	552 (600-1)	672 (700-1)		