

WAAS CH 86625 W20A	APP CRS 198°	Rwy Idg TDZE Apt Elev	6001 501 501
--	------------------------	-----------------------------	---

RNAV (GPS) RWY 20

JOHN C TUNE (JWN)

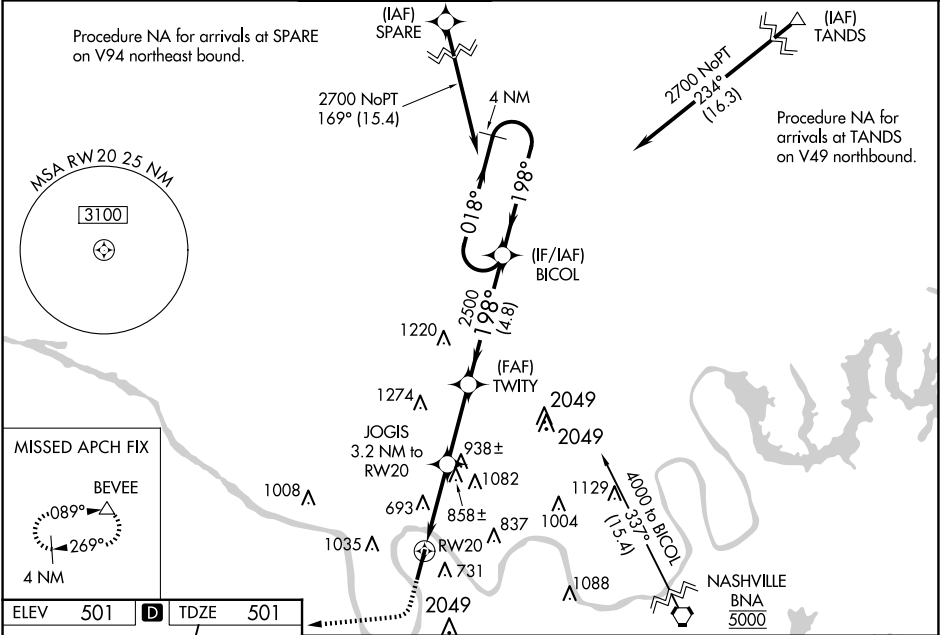
⚠

NA

For uncompensated Baro-VNAV systems, LNAV/VNAV NA below -15°C (5°F) or above 54°C (130°F). DME/DME RNP-0.3 NA. When local altimeter setting not received, use Nashville Intl altimeter setting and increase all DA 40 feet and all visibilities ½ mile; increase all MDA 40 feet and LNAV Cats C and D visibility ½ mile. Circling NA east of Rwy 2-20. Baro-VNAV and VDP NA when using Nashville Intl altimeter setting. Helicopter visibility reduction below ¾ SM NA.

MISSED APPROACH:
Climb to 1200 then
climbing right turn to
3000 direct BEVEE
and hold.

ATIS 127.075	NASHVILLE APP CON 119.35 372.0	JOHN TUNE TOWER ★ 119.45 (CTAF) 0	GND CON 121.7	CLNC DEL 121.7	CLNC DEL 124.55 (when twr closed)	UNICOM 122.7
------------------------	--	---	-------------------------	--------------------------	--	------------------------



1200

3000

BEVEE

*LNAV only.

TWITY

2500

JOGIS

3.2 NM to RW20

*1.8 NM to RW20

RW20

*1560

2500

2700

GP 3.00°

TCH 40

1.8 NM

1.4 NM

3 NM

4.8 NM

CATEGORY	A	B	C	D
LPV DA	856-1¼ 355 (400-1¼)			
LNAV/VNAV DA	1003-1¾ 502 (600-1¾)			
LNAV MDA	1120-1 619 (700-1)		1120-1¾ 619 (700-1¾)	
CIRCLING	1200-1 699 (700-1)		1340-2½ 839 (900-2½)	1340-2¾ 839 (900-2¾)