

WAAS CH <b>78325</b> <b>W02A</b>	APP CRS <b>018°</b>	Rwy Idg TDZE Apt Elev	<b>6001</b> <b>484</b> <b>501</b>
--	------------------------	-----------------------------	---

RNAV (GPS) RWY 2

JOHN C TUNE (JWN)

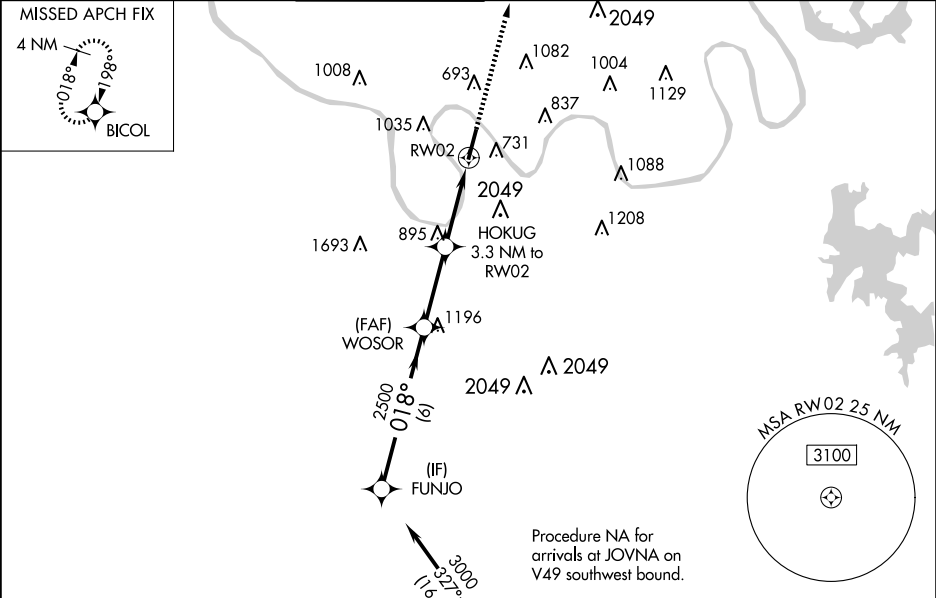
▽

▲ NA

For uncompensated Baro-VNAV systems, LNAV/VNAV NA below -15°C (5°F) or above 54°C (130°F). Circling NA E of Rwy 2-20. Baro-VNAV and VDP NA when using Nashville Intl altimeter setting. DME/DME RNP-0.3 NA. When local altimeter setting not received, use Nashville Intl altimeter setting and increase all DAs 39 feet and all MDAs 40 feet; increase LPV visibility all Cats ⅓ SM, LNAV visibility Cat B ¼ SM.

MISSED APPROACH:  
Climb to 3000 direct BICOL and hold.

ATIS <b>127.075</b>	NASHVILLE APP CON <b>119.35 372.0</b>	JOHN TUNE TOWER ★ <b>119.45 (CTAF) 0</b>	GND CON <b>121.7</b>	CLNC DEL <b>121.7</b>	CLNC DEL <b>124.55</b> (when twr closed)	UNICOM <b>122.7</b>
------------------------	--	---	-------------------------	--------------------------	--	------------------------



FUNJO		WOSOR		HOKUG 3.3 NM to RW02		RW02	
3000		2500		2500		2500	
GP 3.00° TCH 40		2500		*1540		2500	
CATEGORY		A		B		C	
LPV DA		734-7/8		250 (300-7/8)			
LNAV/VNAV DA		1079-2 1/2		595 (600-2 1/2)			
LNAV MDA		1160-1 676 (700-1)		1160-2 676 (700-2)			
CIRCLING		1200-1 699 (700-1)		1340-2 3/4 839 (900-2 3/4)			

ELEV 501

TDZE 484

3000

BICOL

\* LNAV only.

4001 X 100

TWR

0.2% UP

018°

MRL Rwy 2-20

REIL Rlys 2 and 20