

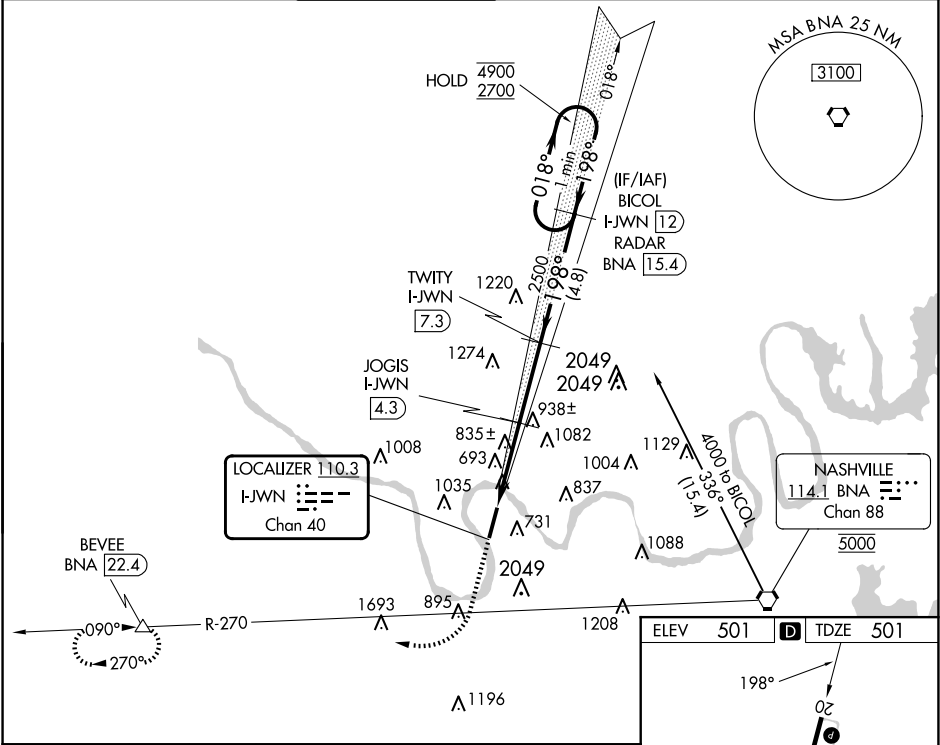
LOC/DME	I-JWN	Rwy Idg	6001
110.3	APP CRS	TDZE	501
Chan 40	198°	Apt Elev	501

ILS or LOC RWY 20

JOHN C TUNE (JWN)

DME required.	MISSED APPROACH: Climb to 2200 then climbing right turn to 3000 on BNA VORTAC R-270 to BEVEE/BNA 22.4 DME and hold.
<div><div>▼</div><div>Circling NA east of Rwy 2-20. VDP NA when using Nashville Intl altimeter setting.</div></div>	
<div><div>▲</div><div>NA</div><div>When local altimeter setting not received, use Nashville Intl altimeter setting and increase S-ILS 20 DA to 738 feet, increase all MDAs 40 feet.</div></div>	

ATIS	NASHVILLE APP CON	JOHN TUNE TOWER ★	GND CON	CLNC DEL	CLNC DEL	UNICOM
127.075	119.35 372.0	119.45 (CTAF) 0	121.7	121.7	124.55 (when twr closed)	122.7



2200	3000	BNA R-270	BEVEE		
↑	↪		△		
		TWITY I-JWN 7.3			
		JOGIS I-JWN 4.3			
		I-JWN 2.9			
		I-JWN 1.1			
		1560			
		2500			
		3000			
		4000			
		4900			
		2700			
		GS 3.00°			
		TCH 40			
		1.8 NM	1.5 NM	3 NM	4.8 NM
CATEGORY	A	B	C	D	
S-ILS 20		701-¾	200 (200-¾)		
S-LOC 20	1100-1	599 (600-1)	1100-1¾	599 (600-1¾)	
✶ CIRCLING	1200-1	699 (700-1)	1340-2½	1340-2¾	
			839 (900-2½)	839 (900-2¾)	

