

WAAS CH 86718 W17A	APP CRS 174°	Rwy Idg 5001 TDZE 971 Apt Elev 971
--	------------------------	---

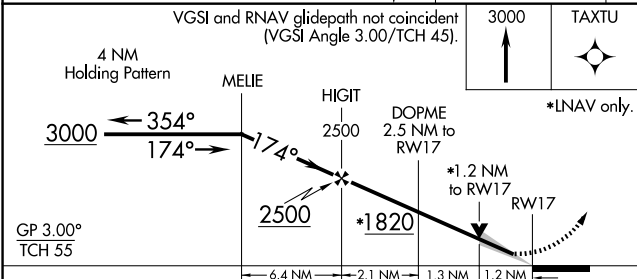
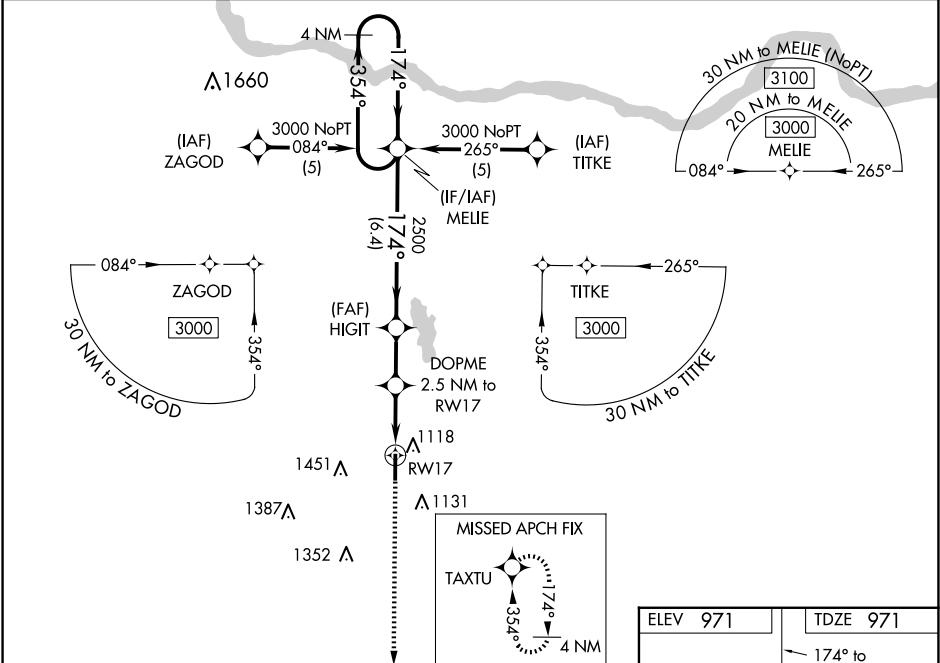
RNAV (GPS) RWY 17
PAULS VALLEY MUNI (PVJ)

RNP APCH.

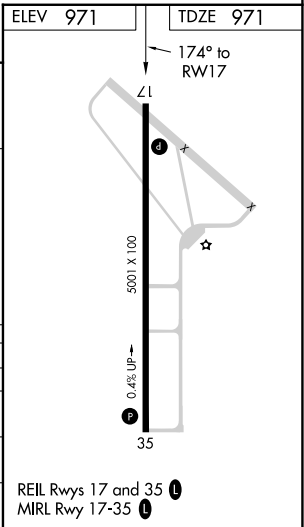
⚠ When local altimeter setting not received, use Ardmore Downtown Exec altimeter setting and increase all DA 97 feet and all MDA 100 feet and LNAV/VNAV visibility ¼ SM all Cats, LNAV Cat C, D visibility ¼ SM and Circling Cat C visibility ¼ SM, and Cat D visibility ½ SM. Baro-VNAV and VDP NA when using Ardmore Downtown Exec altimeter setting. For uncompensated Baro-VNAV systems, LNAV/VNAV NA below -16°C or above 46°C.

MISSED APPROACH:
Climb to 3000 direct TAXTU and hold.

AWOS-3 118.675	FORT WORTH CENTER 124.75 323.0	UNICOM 122.8 (CTAF) 0
--------------------------	--	---------------------------------



CATEGORY	A	B	C	D
LPV DA	1171-1 200 (200-1)			
LNAV/VNAV DA	1413-1½ 442 (500-1½)			
LNAV MDA	1420-1 449 (500-1)	1420-1¼ 449 (500-1¼)	1420-1¾ 449 (500-1¾)	
CIRCLING	1440-1 469 (500-1)	1540-1½ 569 (600-1½)	1760-2 789 (800-2)	



SC-1, 07 AUG 2025 to 04 SEP 2025

SC-1, 07 AUG 2025 to 04 SEP 2025