

WAAS
CH **93838**
W27A

APP CRS
270°

Rwy Idg
TDZE **1240**
Apt Elev **1243**

RNAV (GPS) RWY 27

CUMBERLAND MUNI (UBE)

RNP APCH - GPS.

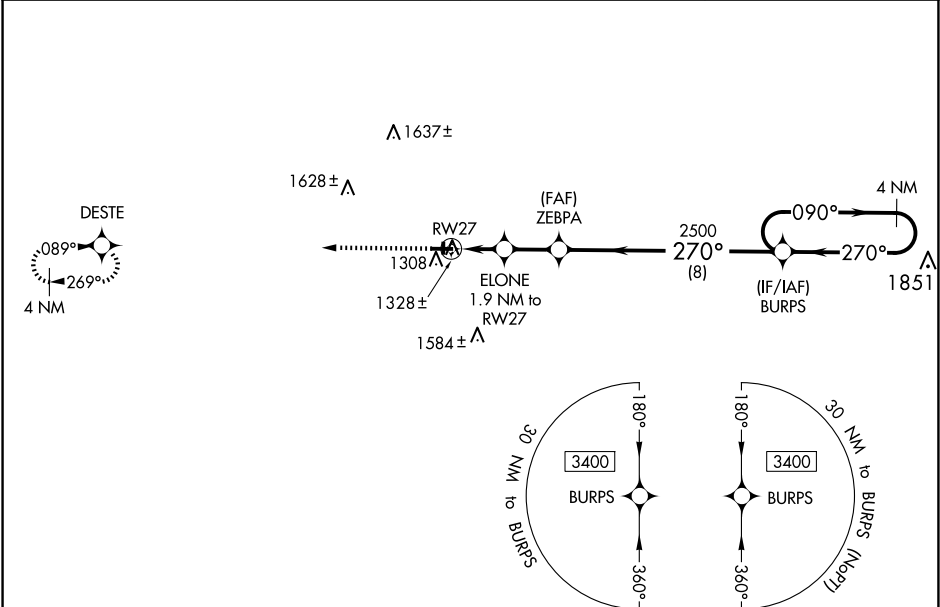
▼

▲

For uncompensated Baro-VNAV systems, LNAV/VNAV NA below -17°C or above 54°C. Baro-VNAV and VDP NA when using Rice Lake altimeter setting. Rwy 27 helicopter visibility reduction below ¾ SM NA. When local altimeter setting not received, use Rice Lake altimeter setting; increase LPV DA to 1533 feet and LNAV/VNAV DA to 1549 feet and all MDA 60 feet; increase LPV all Cats visibility and LNAV Cat C/D visibility ½ mile; increase Circling Cat D visibility ¼ mile. Circling Rwy 18, 36 NA at night.

MISSED APPROACH:
Climb to 3400 direct
DESTE and hold.

AWOS-3PT 119.175	MINNEAPOLIS CENTER 125.3 335.6	GCO 121.725	UNICOM 122.8 (CTAF) 0
----------------------------	--	-----------------------	---------------------------------



ELEV 1243

TDZE 1240

3400

DESTE

81

120

1966

36

4043 X 75

270°

3400

DESTE

ELONE

1.9 NM to RW27

ZEBPA

2500

BURPS

4 NM Holding Pattern

090°

270°

3400

GP 3.00°

TCH 40

CATEGORY	A	B	C	D
LPV DA		1490-1	250 (300-1)	
LNAV/VNAV DA		1506-1	266 (300-1)	
LNAV MDA		1580-1	340 (400-1)	
CIRCLING	1640-1 397 (400-1)	1940-1 697 (700-1)	1940-2 697 (700-2)	1980-2 ¼ 737 (800-2 ¼)