

WAAS
CH **90408**
W12A

APP CRS
124°

Rwy Idg
TDZE **455**
Apt Elev **455**

RNAV (GPS) RWY 12

PRENTISS-JEFFERSON DAVIS COUNTY (M43)

RNP APCH.

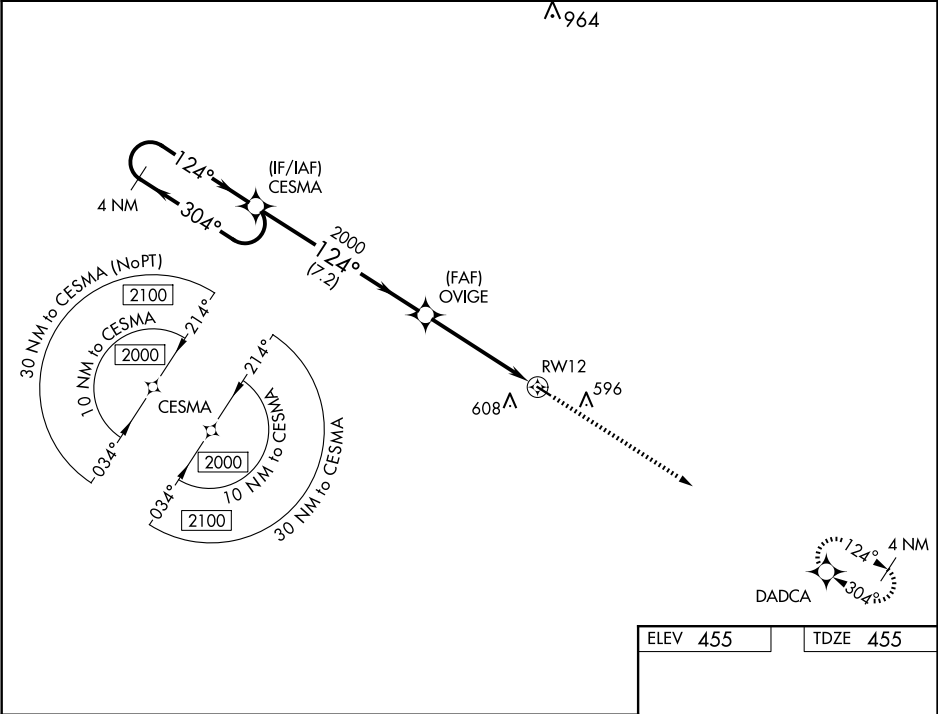
▼

NA

Baro-VNAV NA. Use Brookhaven altimeter setting; when not received, use Hattiesburg/Laurel altimeter setting and increase all DA 27 feet and all MDA 40 feet and increase LPV and LNAV/VNAV all Cats visibility 1/8 mile. Rwy 12 helicopter visibility reduction below 3/4 SM NA.

MISSED APPROACH:
Climb to 2000 direct
DADCA and hold.

1R7 AWOS-3P 118.125	HOUSTON CENTER 126.8 327.8	UNICOM 122.8 (CTAF) 0
-------------------------------	--------------------------------------	---------------------------------



VGSI and RNAV glidepath not coincident (VGSI Angle 2.75/TCH 45).

2000

DADCA

4 NM Holding Pattern

CESMA

OVIGE

RWY 12

GP 3.00° TCH 30

7.2 NM

4.8 NM

CATEGORY	A	B	C	D
LPV DA	770-1 1/8	315 (400-1 1/8)		NA
LNAV/VNAV DA	959-1 3/4	504 (600-1 3/4)		NA
LNAV MDA	1020-1	565 (600-1)		NA
CIRCLING	1080-1	625 (700-1)		NA

MIRL Rwy 12-30 0