

BRISTOW, OKLAHOMA

AL-6871 (FAA)

22139

WAAS CH 53643 W18A	APP CRS 175°	Rwy Idg TDZE Apt Elev	4001 854 870
--	------------------------	-----------------------------	---

RNAV (GPS) RWY 18
JONES MEML (3F7)

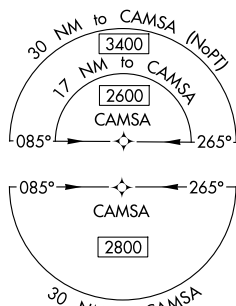
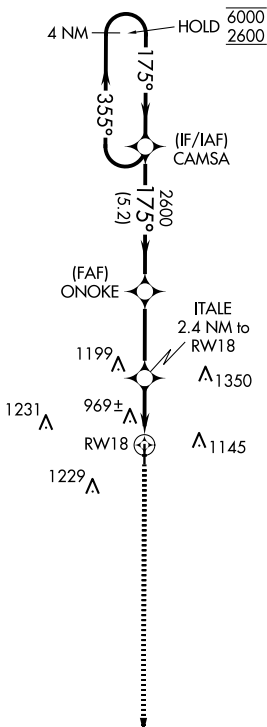
RNP APCH.

T Rwy 18 helicopter visibility reduction below $\frac{3}{4}$ SM NA.
A NA Baro-VNAV NA. Use Cushing altimeter setting.

MISSED APPROACH: Climb to 2600 direct DASTE and hold.

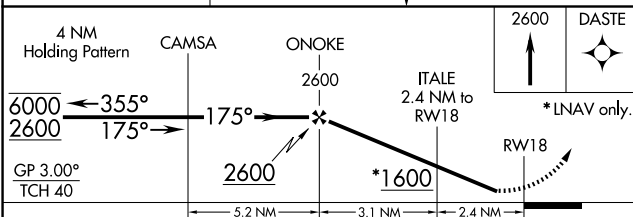
CUH AWOS-3
118.25


KANSAS CITY CENTER
127.8 319.1

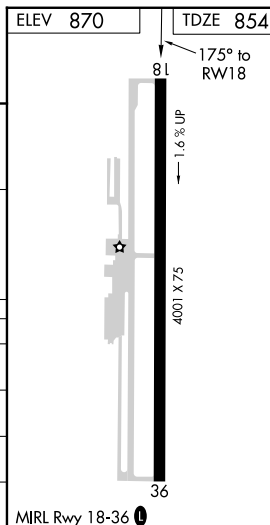
CTAF
122.9 L

1786

MISSED APCH FIX



CATEGORY	A	B	C	D
LPV DA	1156-1 302 (300-1)			NA
LNAV/ VNAV DA	1191-1 337 (400-1)			NA
LNAV MDA	1280-1 426 (500-1)	1280-1¼ 426 (500-1¼)		NA
 CIRCLING	1380-1 510 (600-1)	1500-1 630 (700-1)	1600-2 730 (800-2)	NA



BRISTOW, OKLAHOMA

Amdt 2 10SEP20

35°48'N-96°25'W

JONES MEML (3F7)

RNAV (GPS) RWY 18

SC-1, 07 AUG 2025 to 04 SEP 2025