

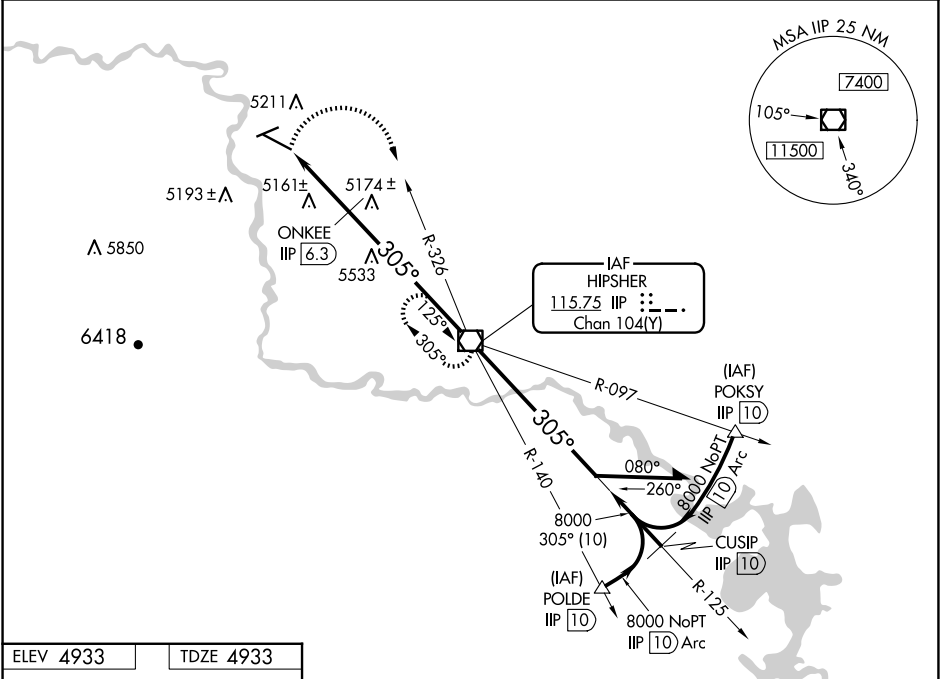
VOR/DME IIP	APP CRS	Rwy Idg	6534
115.75	305°	TDZE	4933
Chan 104(Y)		Apt Elev	4933

VOR RWY 29

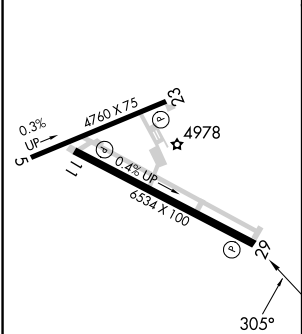
CONVERSE COUNTY (DGW)

MISSED APPROACH: Climbing right turn to 8000 via heading 160° and IIP VOR/DME R-326 to IIP VOR/DME and hold, continue climb-in-hold to 8000.

ASOS 135.225	DENVER CENTER 135.6 363.025	UNICOM 122.8 (CTAF) 0
-----------------	--------------------------------	--------------------------



ELEV 4933	TDZE 4933
-----------	-----------



REIL Rwy 11 and 29 0

MIRL Rws 11-29 and 5-23 0

FAF to MAP 9.4 NM

Knots	60	90	120	150	180
Min:Sec	9:24	6:16	4:42	3:46	3:08

8000

hdg 160°

IIP R-326

IIP

VGSI and descent angles not coincident (VGSI Angle 3.00/TCH 45).
Remain within 10 NM

IIP VOR/DME

125°

305°

8000

5960

3.03° TCH 40

ONKEE IIP 6.3

IIP 9.4

IIP 8

1.4

1.7

6.3 NM

1/4

CATEGORY	A	B	C	D
S-29	5960-1¼ 1027 (1100-1¼)	5960-1½ 1027 (1100-1½)	5960-3	1027 (1100-3)
CIRCLING	5960-1¼ 1027 (1100-1¼)	5960-1½ 1027 (1100-1½)	5960-3	1027 (1100-3)

ONKEE FIX MINIMUMS

S-29	5420-1	487 (500-1)	5420-1¼ 487 (500-1¼)	5420-1½ 487 (500-1½)
CIRCLING	5520-1	587 (600-1)	5680-2¼ 747 (800-2¼)	5820-3 887 (900-3)