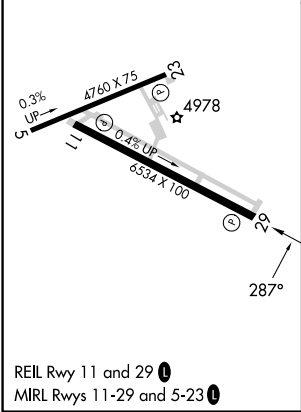
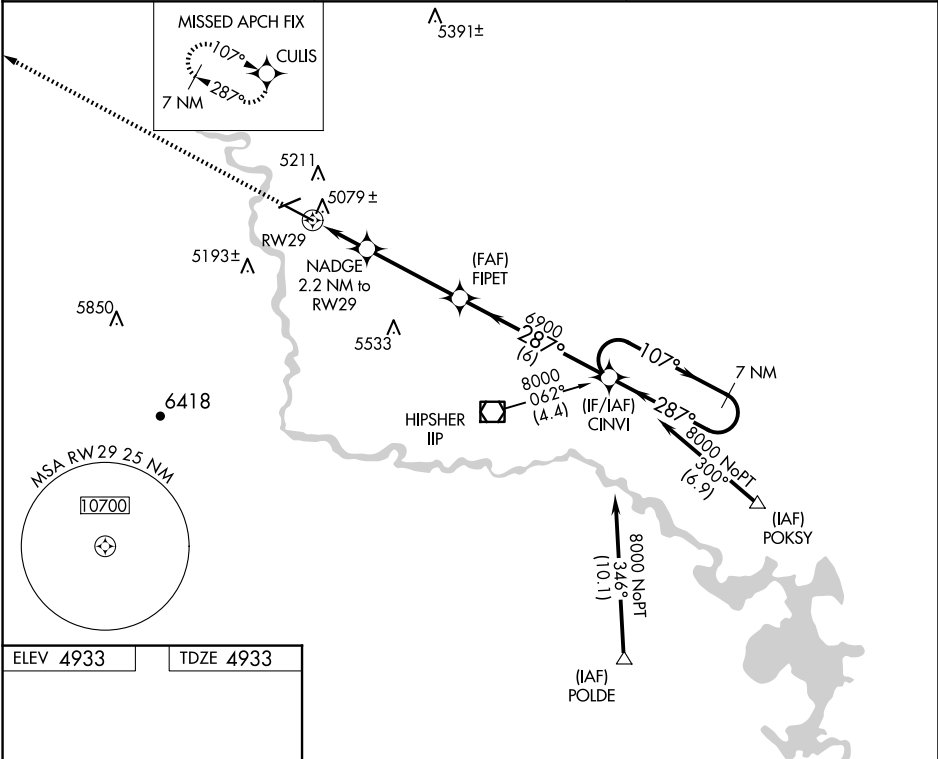


WAAS CH <b>61018</b> <b>W29A</b>	APP CRS <b>287°</b>	Rwy Idg TDZE <b>4933</b> Apt Elev <b>4933</b>
--	------------------------	---

RNAV (GPS) RWY 29  
CONVERSE COUNTY (DGW)

RNP APCH-GPS. ▼ For uncompensated Baro-VNAV systems, LNAV/VNAV ▲ NA below -24°C or above 39°C.	MISSED APPROACH: Climb to 8000 direct CULIS and hold.
--	---

ASOS <b>135.225</b>	DENVER CENTER <b>135.6 363.025</b>	UNICOM <b>122.8 (CTAF) 0</b>
------------------------	---------------------------------------	---------------------------------



8000	CULIS	VGSI and RNAV glidepath not coincident (VGSI Angle 3.00°/TCH 45).		7 NM Holding Pattern	
↑	✦	NADGE 2.2 NM to RW29	FIPET 6900	CINVI	
*LNAV only		*1.5 NM to RW29	6900	8000	
		5660*	287°	107°	
		1.5	0.7	3.8 NM	
				6 NM	
				GP 3.00° TCH 39	
CATEGORY		A	B	C	D
LPV DA			5133-3/4	200 (200-3/4)	
LNAV/ VNAV DA			5369-1 1/2	436 (500-1 1/2)	
LNAV MDA		5440-1	507 (600-1)	5440-1 1/2	507 (600-1 1/2)
CIRCLING		5520-1	587 (600-1)	5680-2 1/4 747 (800-2 1/4)	5820-3 887 (900-3)

NW-1, 07 AUG 2025 to 04 SEP 2025

NW-1, 07 AUG 2025 to 04 SEP 2025