

DOUGLAS, WYOMING

AL-6870 (FAA)

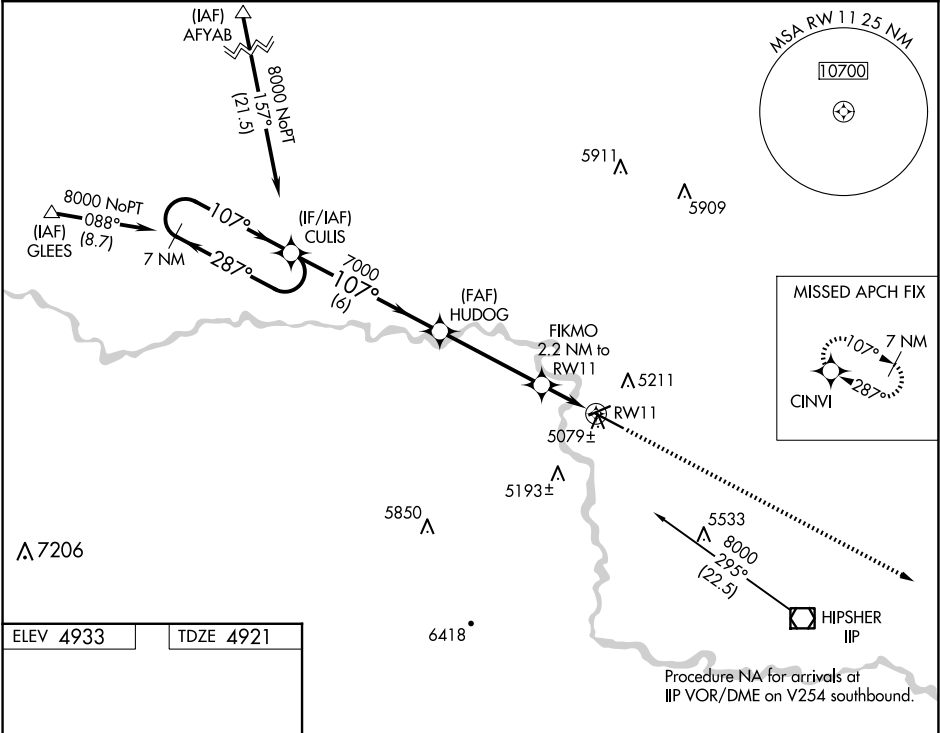
22027

WAAS CH <b>58018</b> <b>W11A</b>	APP CRS <b>107°</b>	Rwy Idg TDZE Apt Elev <b>6534</b> <b>4921</b> <b>4933</b>
--	------------------------	--

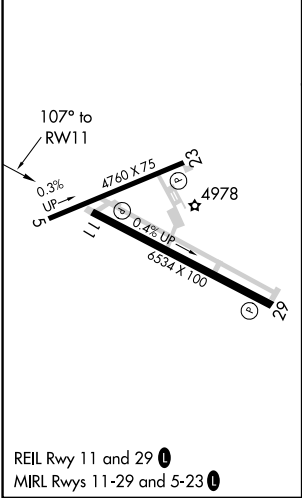
**RNAV (GPS) RWY 11**  
CONVERSE COUNTY (DGW)

RNP APCH. ▼ For uncompensated Baro-VNAV systems, LNAV/VNAV NA below -24°C (-11°F) or above 39°C (102°F).	MISSED APPROACH: Climb to 8000 direct CINVI and hold.
---	---

ASOS <b>135.225</b>	DENVER CENTER <b>135.6 363.025</b>	UNICOM <b>122.8 (CTAF) 0</b>
------------------------	---------------------------------------	---------------------------------



ELEV 4933	TDZE 4921
-----------	-----------



		8000		CINVI		
		7000		*LNAV only		
		*5640		*1.3 NM to RW11		
		6 NM		4.1 NM		
		0.9 NM		1.3 NM		
CATEGORY	A	B	C	D		
LPV DA	5121-3/4 200 (200-3/4)					
LNAV/VNAV DA	5329-1 1/2 408 (400-1 1/2)					
LNAV MDA	5340-1 419 (500-1)			5340-1 1/4 419 (500-1 1/4)		

DOUGLAS, WYOMING  
Orig-A 07NOV19

42°48'N-105°23'W

CONVERSE COUNTY (DGW)  
**RNAV (GPS) RWY 11**

NW-1, 07 AUG 2025 to 04 SEP 2025

NW-1, 07 AUG 2025 to 04 SEP 2025