

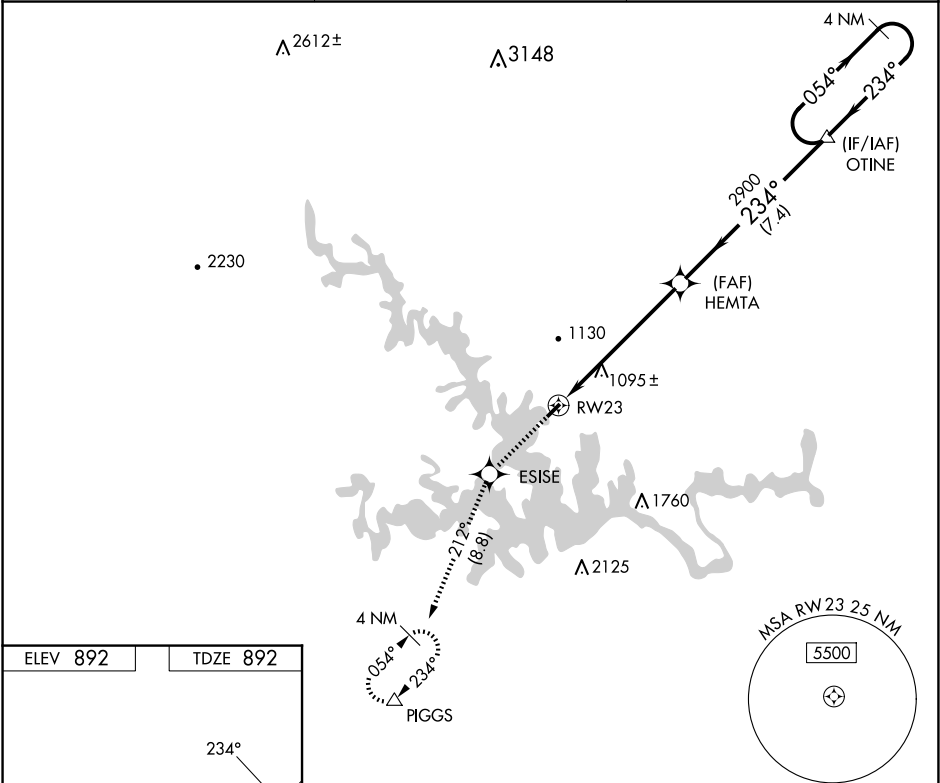
APP CRS	Rwy Idg	3058
234°	TDZE	892
	Apt Elev	892

RNAV (GPS) RWY 23

SMITH MOUNTAIN LAKE (W91)

<div><div>NA</div><div>DME/DME RNP-0.3 NA. Use Lynchburg altimeter setting; when not received, use Roanoke altimeter setting and increase all MDA 40 feet. Procedure NA at night. Helicopter visibility reduction below 1 SM NA.</div></div>	<div>MISSED APPROACH: Climb to 4000 direct ESISE and on track 212° to PIGGS and hold.</div>
--	---

LYH ASOS 119.8	ROANOKE APP CON 135.0 254.325	UNICOM 122.975 (CTAF) 0
-------------------	----------------------------------	----------------------------



	<table><tr><td>4000 ↑</td><td>ESISE ✱</td><td>tr 212°</td><td>PIGGS △</td><td>Visual Segment - Obstacles.</td><td>4 NM Holding Pattern</td></tr></table>				4000 ↑	ESISE ✱	tr 212°	PIGGS △	Visual Segment - Obstacles.	4 NM Holding Pattern								
	4000 ↑	ESISE ✱	tr 212°	PIGGS △	Visual Segment - Obstacles.	4 NM Holding Pattern												
	<table><tr><td>CATEGORY</td><td>A</td><td>B</td><td>C</td><td>D</td></tr><tr><td>LNAV MDA</td><td>1900-3</td><td>1008 (1100-3)</td><td colspan="2">NA</td></tr><tr><td>CIRCLING</td><td>1900-3</td><td>1008 (1100-3)</td><td colspan="2">NA</td></tr></table>				CATEGORY	A	B	C	D	LNAV MDA	1900-3	1008 (1100-3)	NA		CIRCLING	1900-3	1008 (1100-3)	NA
CATEGORY	A	B	C	D														
LNAV MDA	1900-3	1008 (1100-3)	NA															
CIRCLING	1900-3	1008 (1100-3)	NA															
MRL Rwy 5-23																		

MIRL Rwy 5-23 0