

WAAS CH <b>99444</b> <b>W32A</b>	APP CRS <b>336°</b>	Rwy Idg <b>4299</b> TDZE <b>1821</b> Apt Elev <b>1821</b>
--	------------------------	---

## RNAV (GPS) RWY 32

STEPHEN A BEAN MUNI (8BØ)

RNP APCH - GPS.

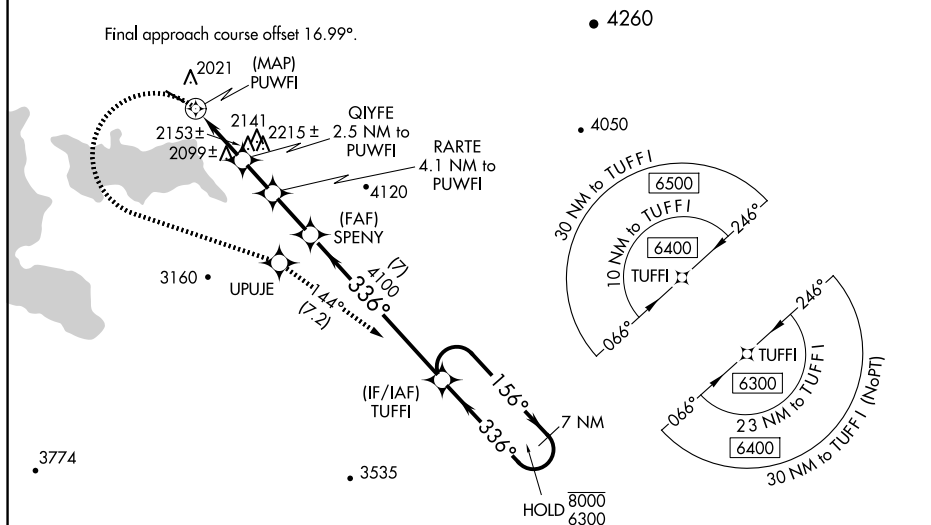


Circling NA for Cat C northeast of Rwy 14-32. Procedure NA at night. Rwy 32 helicopter visibility reduction below 1 SM NA.

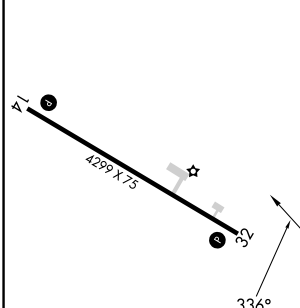
**MISSED APPROACH:** Climbing left turn to 6300 direct UPUJE and track 144° to TUFFI and hold, continue climb-in-hold to 6300.

AWOS-3PT  
118.0

BOSTON CENTER	
124.25	290.5

UNICOM  
122.8 (CTAF) **L**

ELEV 1821		TDZE 1821
-----------	--	-----------



6300 UPUJE TUFFI

tr 144°

VGSi and descent angles not coincident (VGSi Angle 3.00/TCH 40).

7 NM Holding Pattern

RARTE 4.1 NM to PUWFI

SPENY

TUFFI

156° → 8000

← 336° 6300

336°

4100

3.20° TCH 40

2860

3420

PUWFI

QIYFE 2.5 NM to PUWFI

0.5 2.5 NM 1.6 NM 2 NM 7 NM

CATEGORY	A	B	C	D
LP MDA	2560-1	739 (800-1)	2560-2 739 (800-2)	NA
LNAV MDA	2640-1 819 (900-1)	2640-1¼ 819 (900-1¼)	2640-2½ 819 (900-2½)	NA
<b>C</b> CIRCLING	2640-1¼ 819 (900-1¼)	2640-2½ 819 (900-2½)		NA

REIL Rwy 14 and 32 L

MIRL Rwy 14-32 **L**